

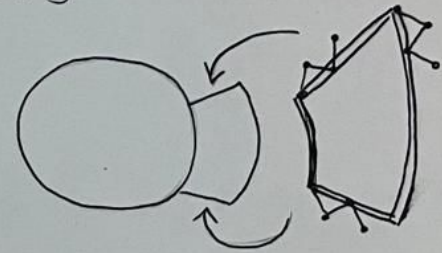
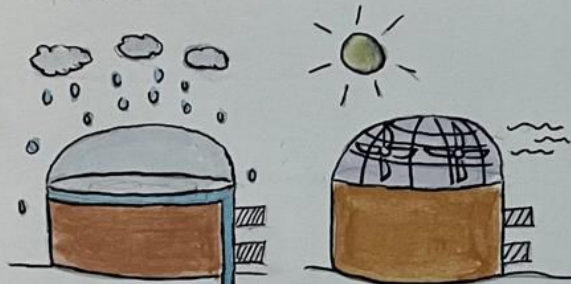
FUTURE HOUSE - Concept 1

Problem Statement: Balancing Oxygen, Resources, & Space.



You can minimize and maximize spaces in your house.

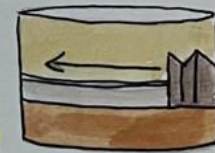
The house will take care of all the resources.



The dome is made of glass/solar panels.

Foldable walls to make the deck into a bedroom, so one space is used in multiple ways.

There will be small windmills on them. They will produce energy to supply the house.



Deck



Room

The dome will be activated as soon as it starts raining, it will trickle down the pipe and water will be harvested.



septic Tank to manage the wastewater system and decompose for use.



Bedroom Plan: Modular walls.

The indoor walls are foldable, so that the plan can be changed based on lifestyle.



Pollution, gas emissions, etc. are reducing oxygen levels. Thus, there is a green space

for more oxygen and fresh air, to solve for the oxygen reduction.

FUTURE HOUSE - Concept 2



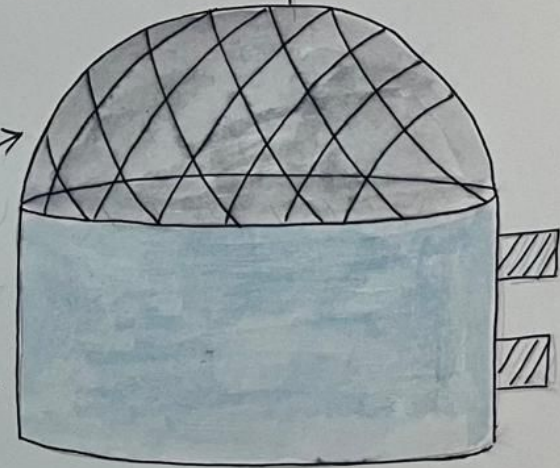
Yin and Yang, though opposite, synergize harmoniously to create balance and harmony within a house, fostering a cohesive living environment.

Incorporating the concept of opposites into my home design, I delineated one side for public gatherings for individuals to socialize, while the other side serves as a private sanctuary for individual relaxation and solitude.

My ultimate design, inspired by the principles of Yin and Yang, integrates futuristic concepts such as resource collection, safety, and advanced machinery, merging traditional philosophy with modern/future innovation.

MATERIAL:

Exterior walls will be made from recycled steel and plastic, Interior walls from bamboo. Automatic doors from recycled steel. Roof from glass. My house will have exterior walls made of tinted glass, to give an open look.



Why a curvy shape?

- They withstand natural disasters more.
- Require less material.
- Durable so they last longer.



up



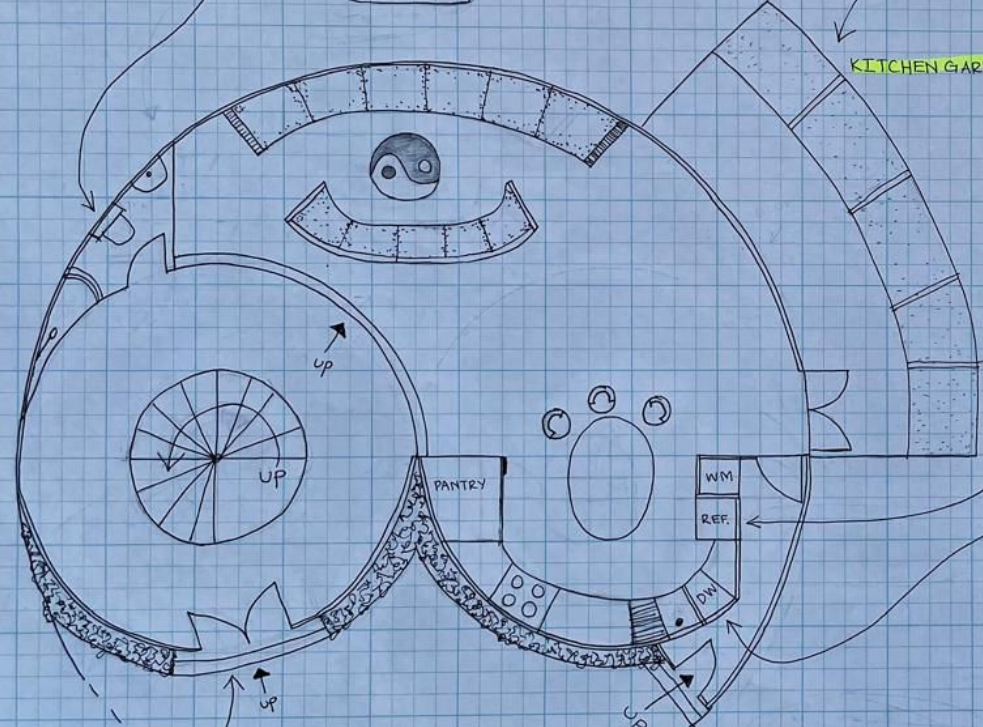
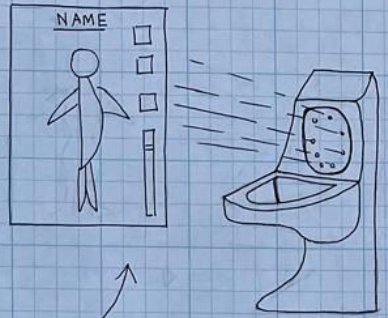
down

Retractable roof: depending on the weather. it opens and closes.

1 FLOOR

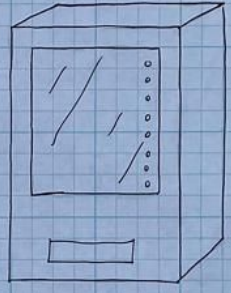
FUTURISTIC HOUSE

This futuristic toilet will be a lot smaller, while offering health tracking capabilities through urine samples and other bodily outputs. Plus, it will monitor your diet and manage your health.

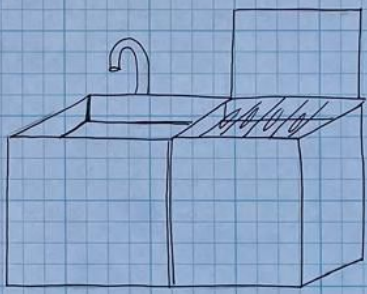


Kitchen garden will serve as an integral component. It will provide fresh and organic produce at hand. The gardens will promote sustainability by reducing reliance on store produce and minimize carbon footprint. They will also be healthier as they will be grown fresh.

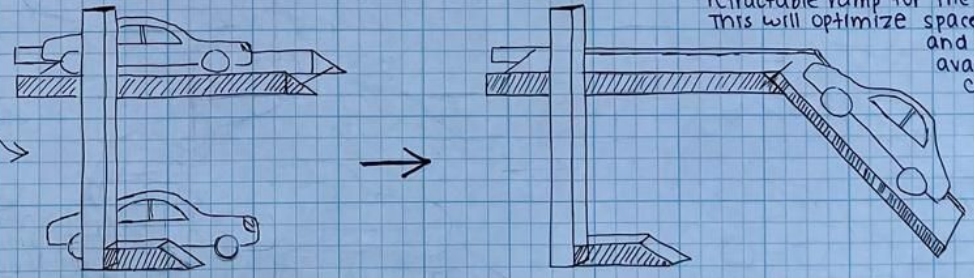
Refrigerators will resemble vending machines: users purchase items to stock the fridge, and it automatically calculates quantities of each item. Additionally, it will assist in creating shopping lists meal plans based on needs.



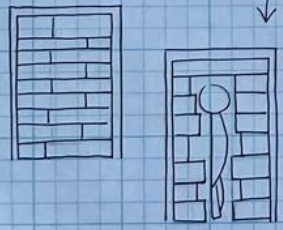
The sink and dishwasher will be integrated with one section serving as a conventional sink and the other functioning as a dishwasher, allowing dishes to be loaded from above. This setup will streamline tasks, and maximize space efficiency.



The future car parking garage will incorporate 2 levels for parking, with the 2nd level featuring a retractable ramp for the car to go up. This will optimize space utilization and maximize available parking capacity.



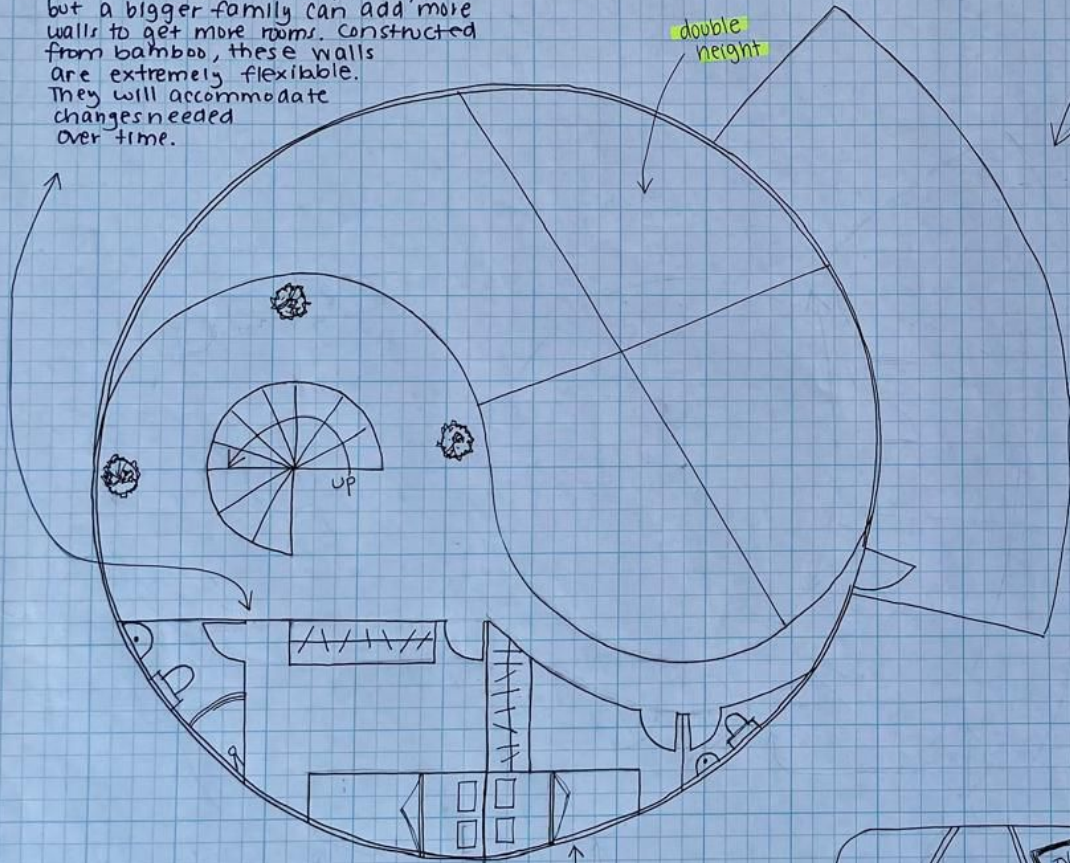
Future doors will enhance efficiency, occupy minimal space, and operate automatically. Moreover, they will prioritize safety by necessities like advanced keys. The key will be a biometric scan for entry, ensuring secure access.



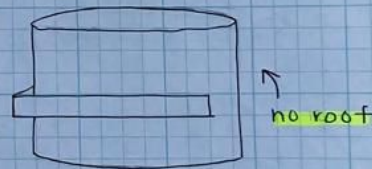
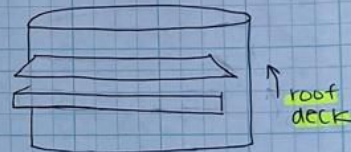
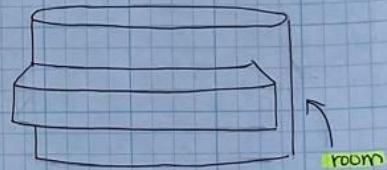
2 FLOOR

FUTURISTIC HOUSE

The **indoor walls** are designed to be modular, offering the flexibility to adjust your living space according to different life stages. For example, a couple may choose to remove a wall to create a more open layout, but a bigger family can add more walls to get more rooms. Constructed from bamboo, these walls are extremely flexible. They will accommodate changes needed over time.

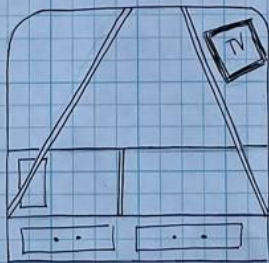


Fold walls to turn into room.



Space will be a major problem in the future. Thus, we need **flexible spaces**. This outdoor deck offers the ability to transition between room and deck, adapting to accommodate various household sizes.

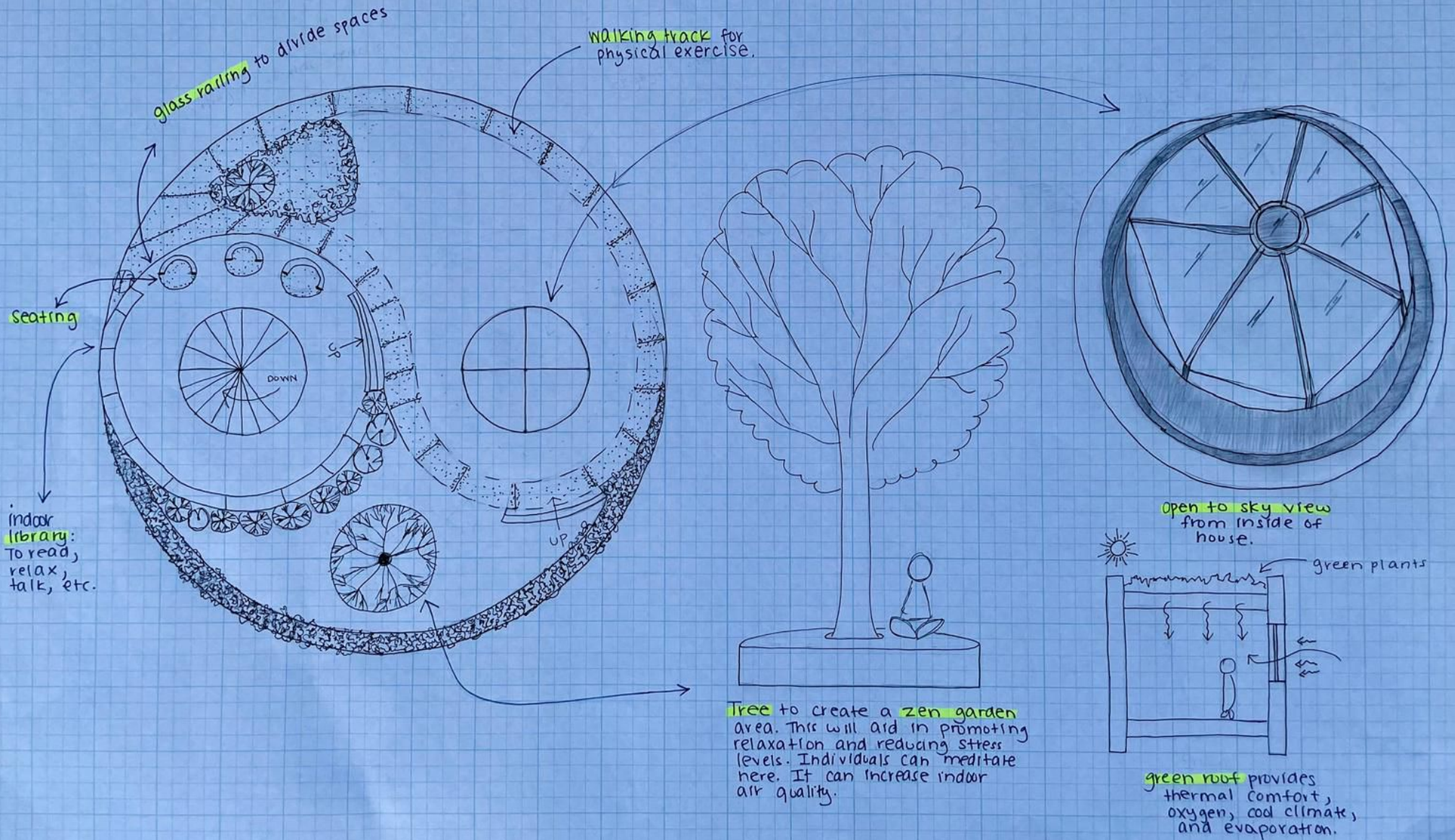
Additionally, the **retractable roof** provides the flexibility to adjust according to weather conditions, allowing for seamless control of indoor-outdoor living experiences.



Futuristic beds feature adjustable temperature settings to cater to individual health needs and preferences. Equipped with built-in massage functionality for additional comfort, these beds are like a capsule, and have a personal TV attached for entertainment.

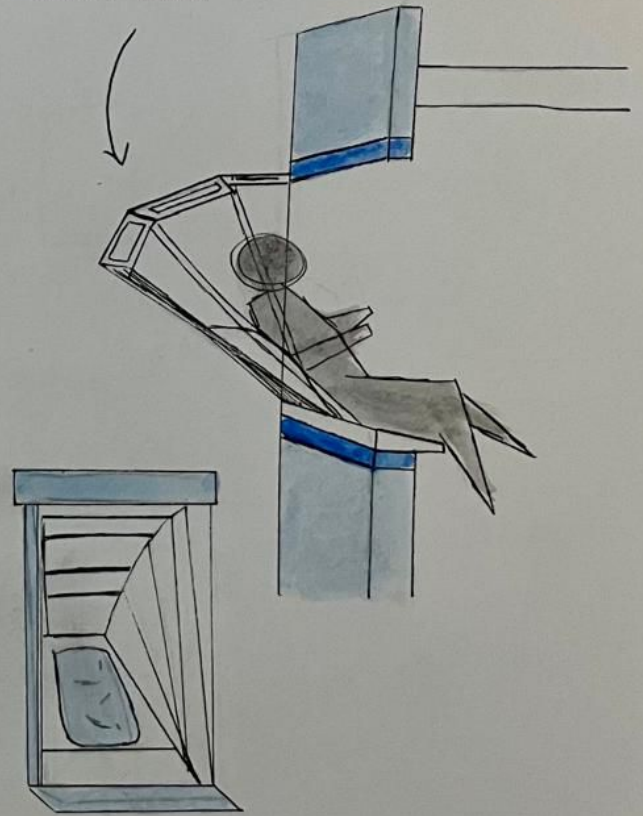
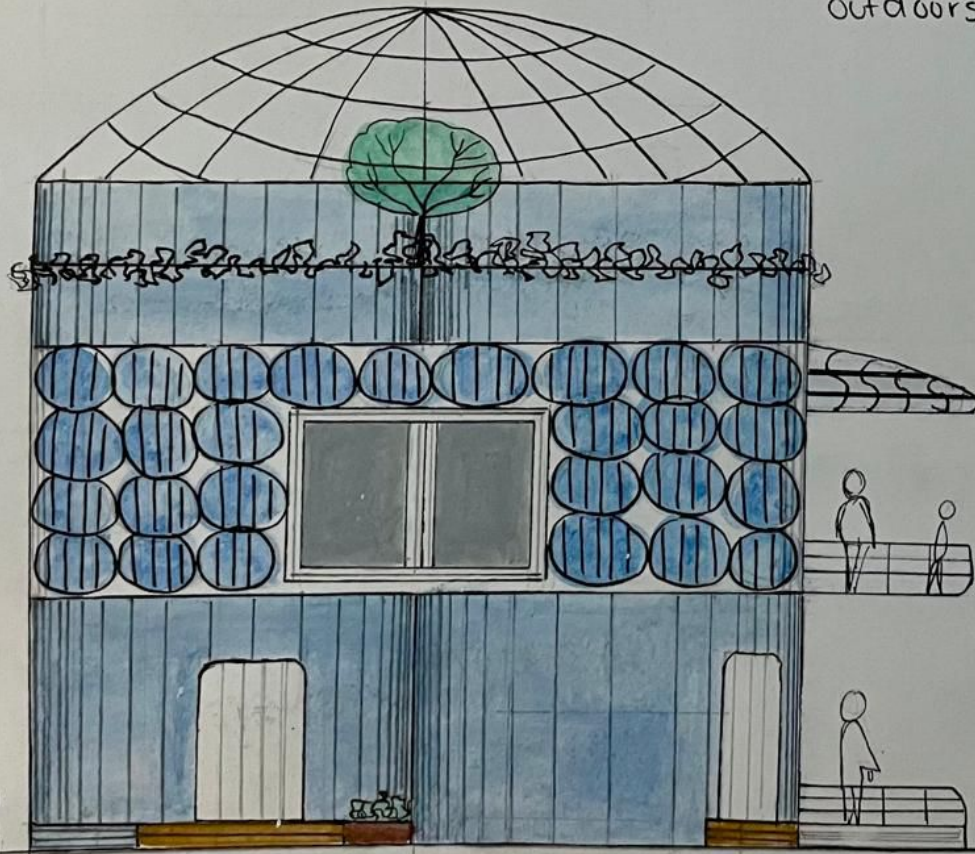
3 FLOOR

FUTURISTIC HOUSE



FUTURE HOUSE - Front Elevation

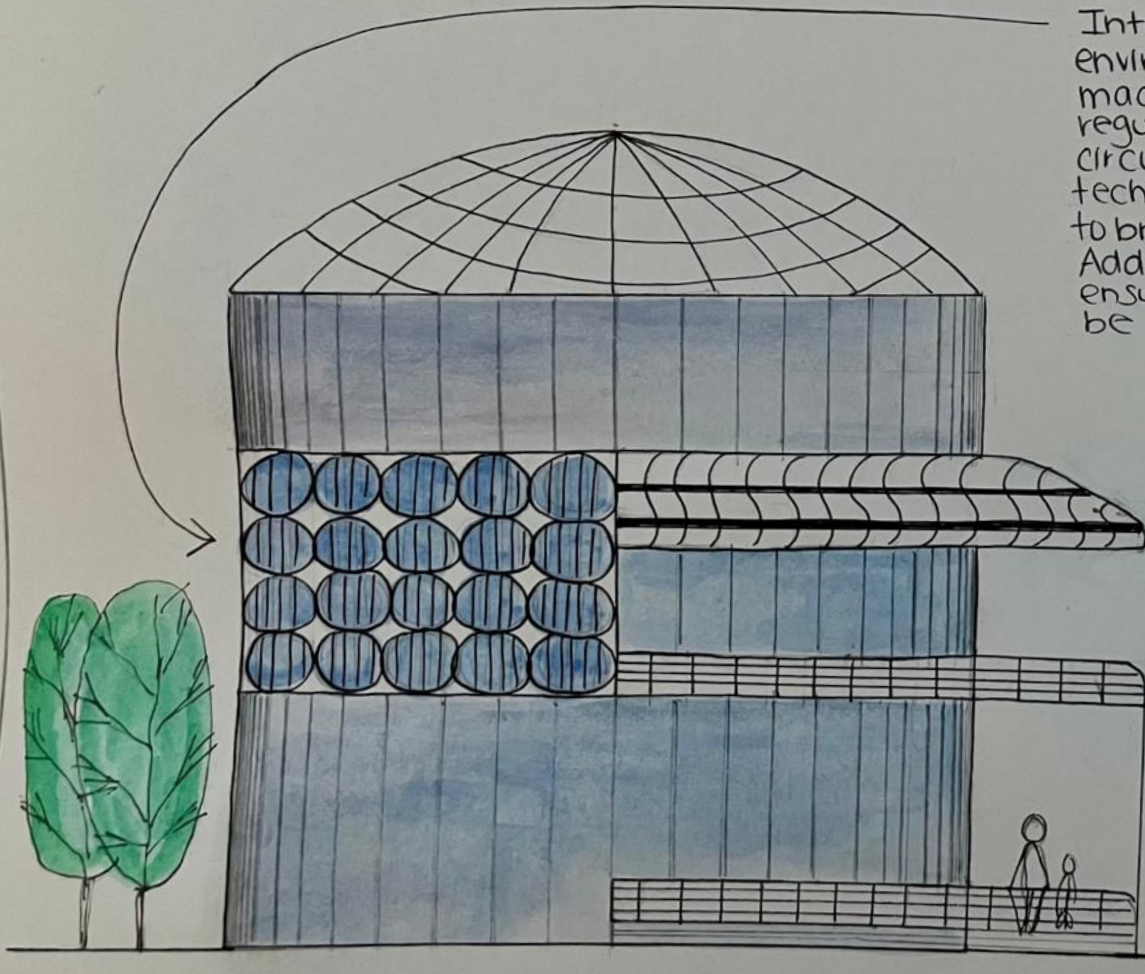
"Sky" window to enhance the indoor experience by fostering a stronger connection with the outdoors.



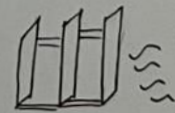
FUTURE HOUSE - Back Elevation

Operable Facade:

Integrated to accommodate various environmental conditions, this feature is a machine on the outside of the house to regulate indoor temperatures, airflow, and circulation within the building. Automatic technology will handle these adjustments to bring indoor temperature to a comfort level. Additionally, it will be capable to filter air ensuring fresh air, since future air will be extremely polluted.



+



Depending on the required air volume, the facade will adjust by opening and closing (lines on the drawing). Then, the air will pass through the inner glass to be purified before entering the indoor space, ensuring a home filled with oxygen.

FUTURE HOUSE - Cross Section

The stairs function like escalator to go up and down. By pressing floor buttons you will be able to move with ease. The stairs are powered by solar panels. They also convert into ramps for wheelchair accessibility, ensuring ease of movement for all individuals.

