

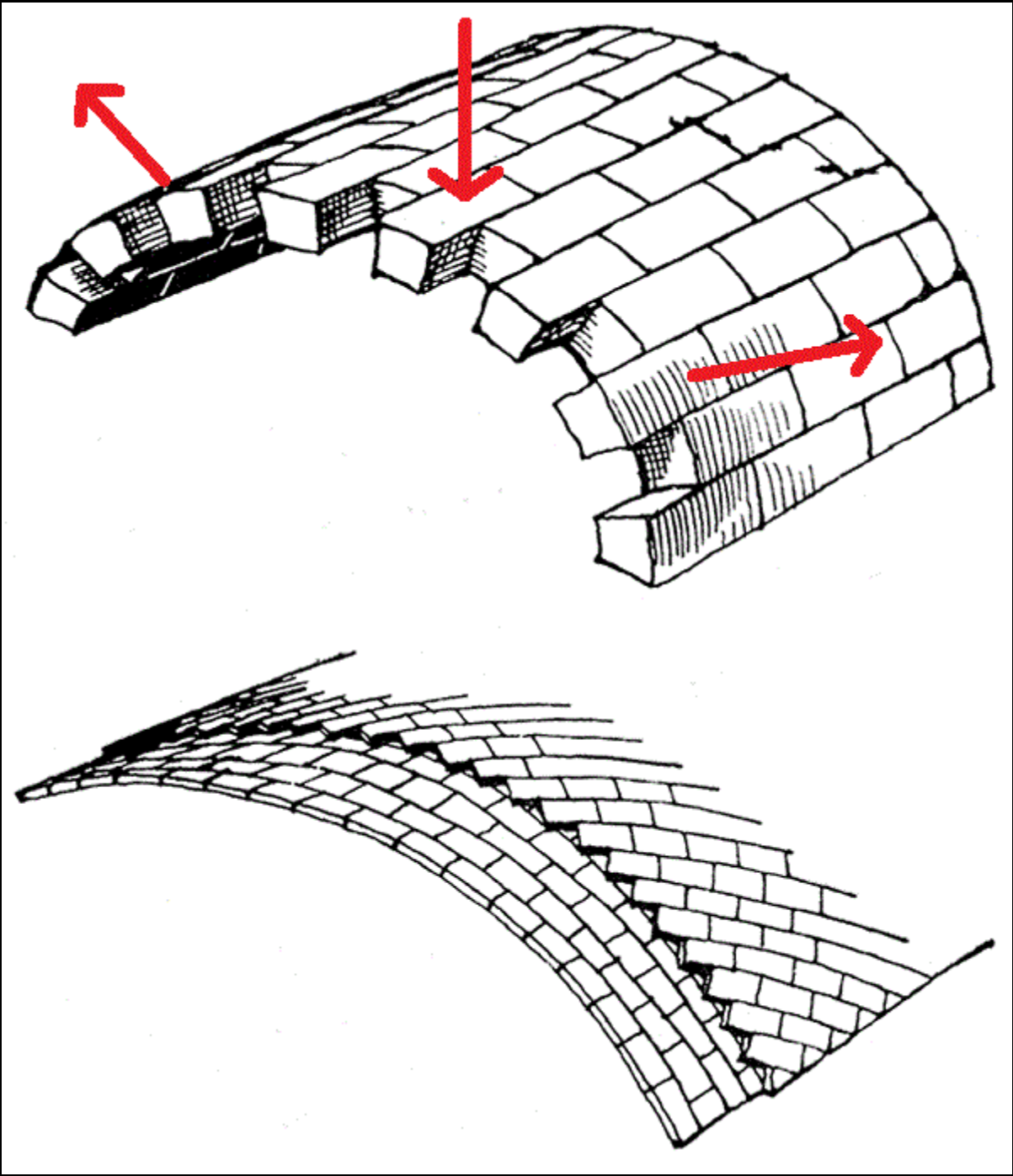
The Architecture of Antoni Gaudí

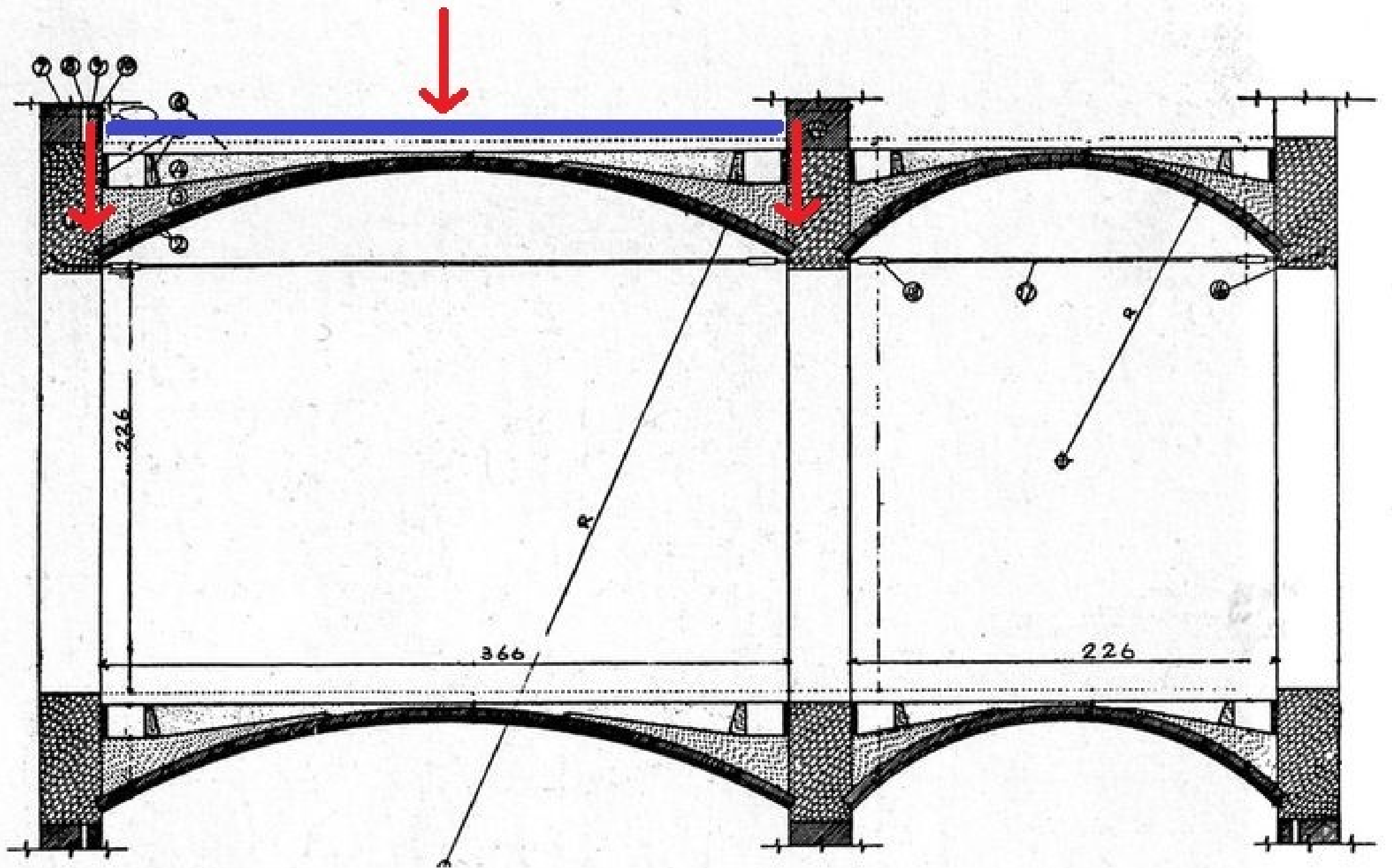
Lecture 6: Fluid Plasticity (2020.08.03)

Osher Lifelong Learning Institute
Carnegie Mellon University
Matthew Schlueb, Instructor

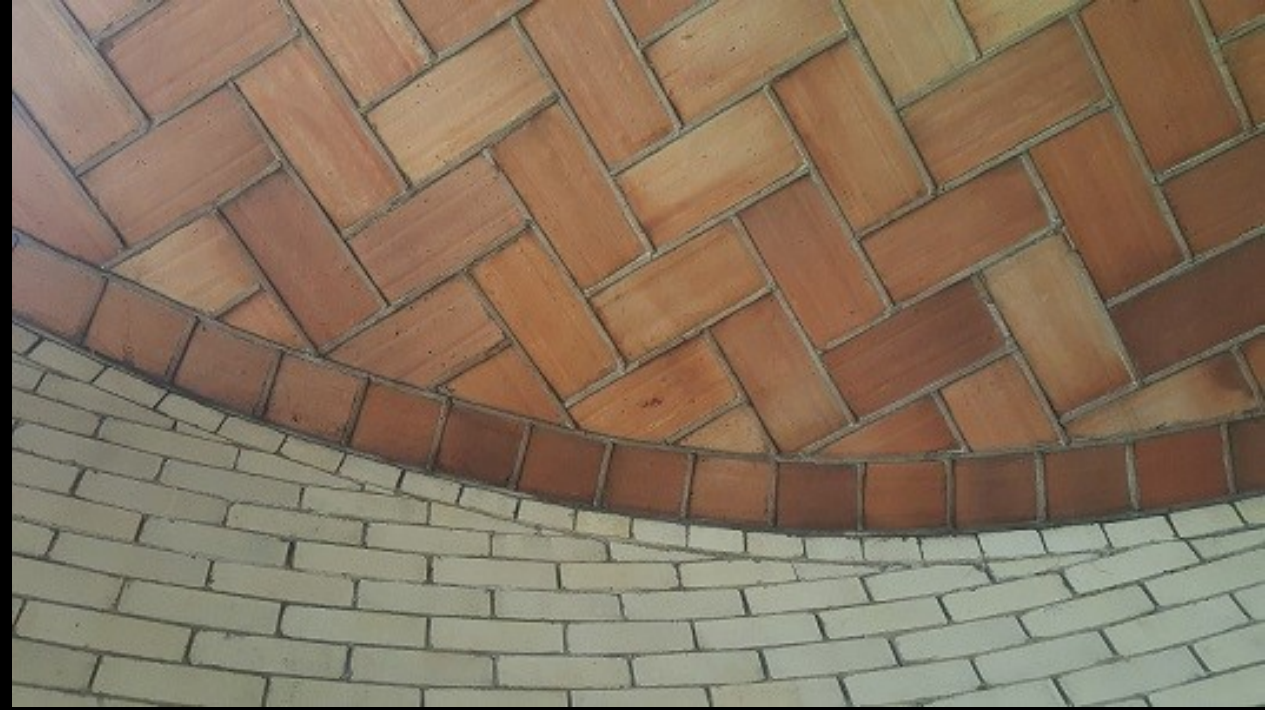


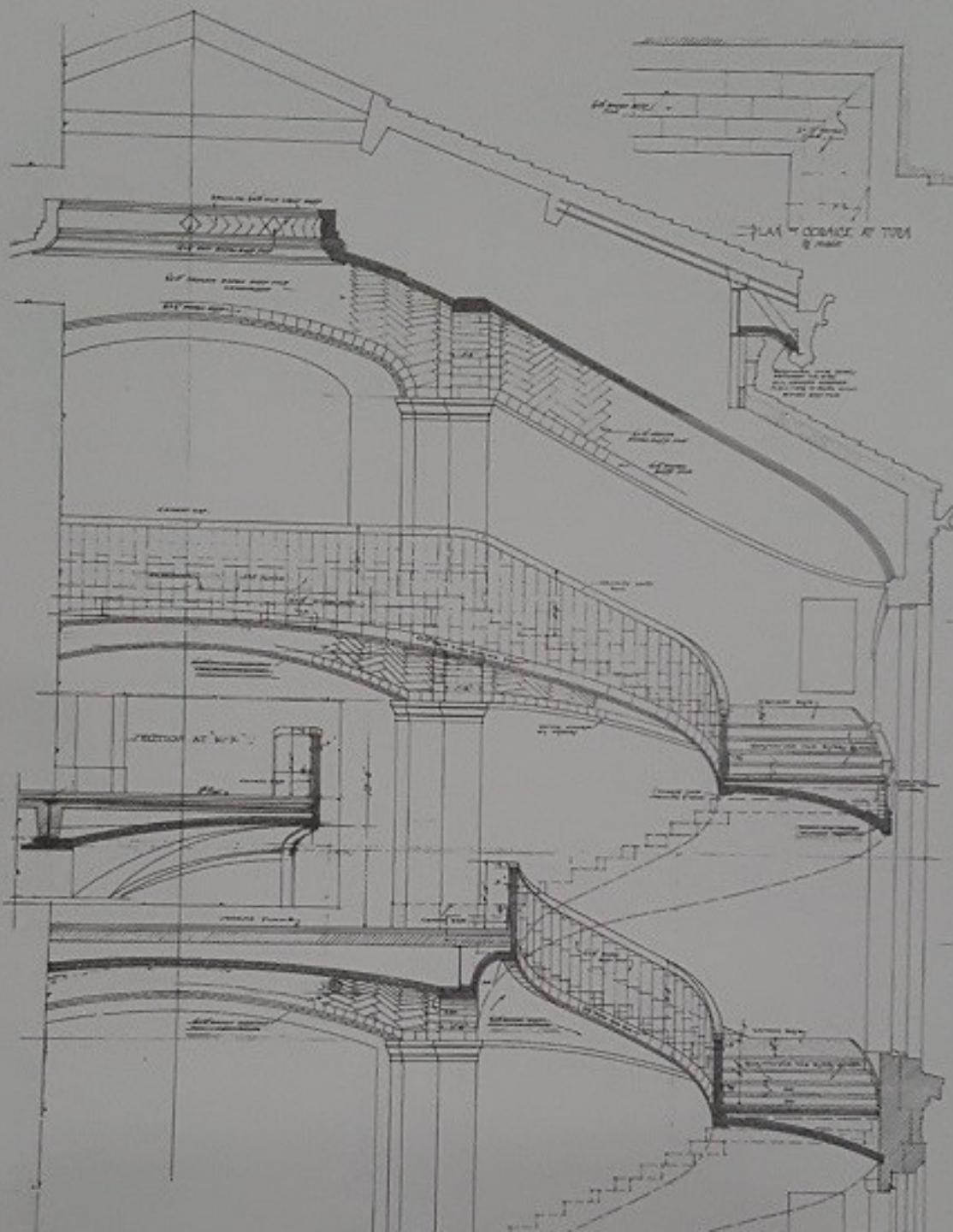




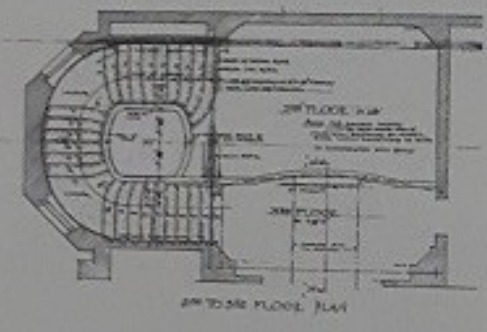
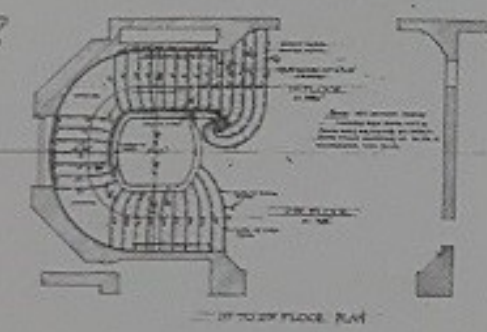
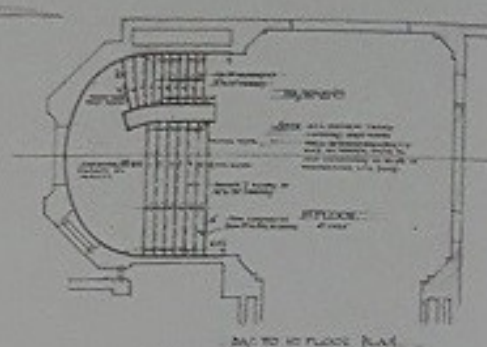








PLAN OF CORNER AT TURN
of main







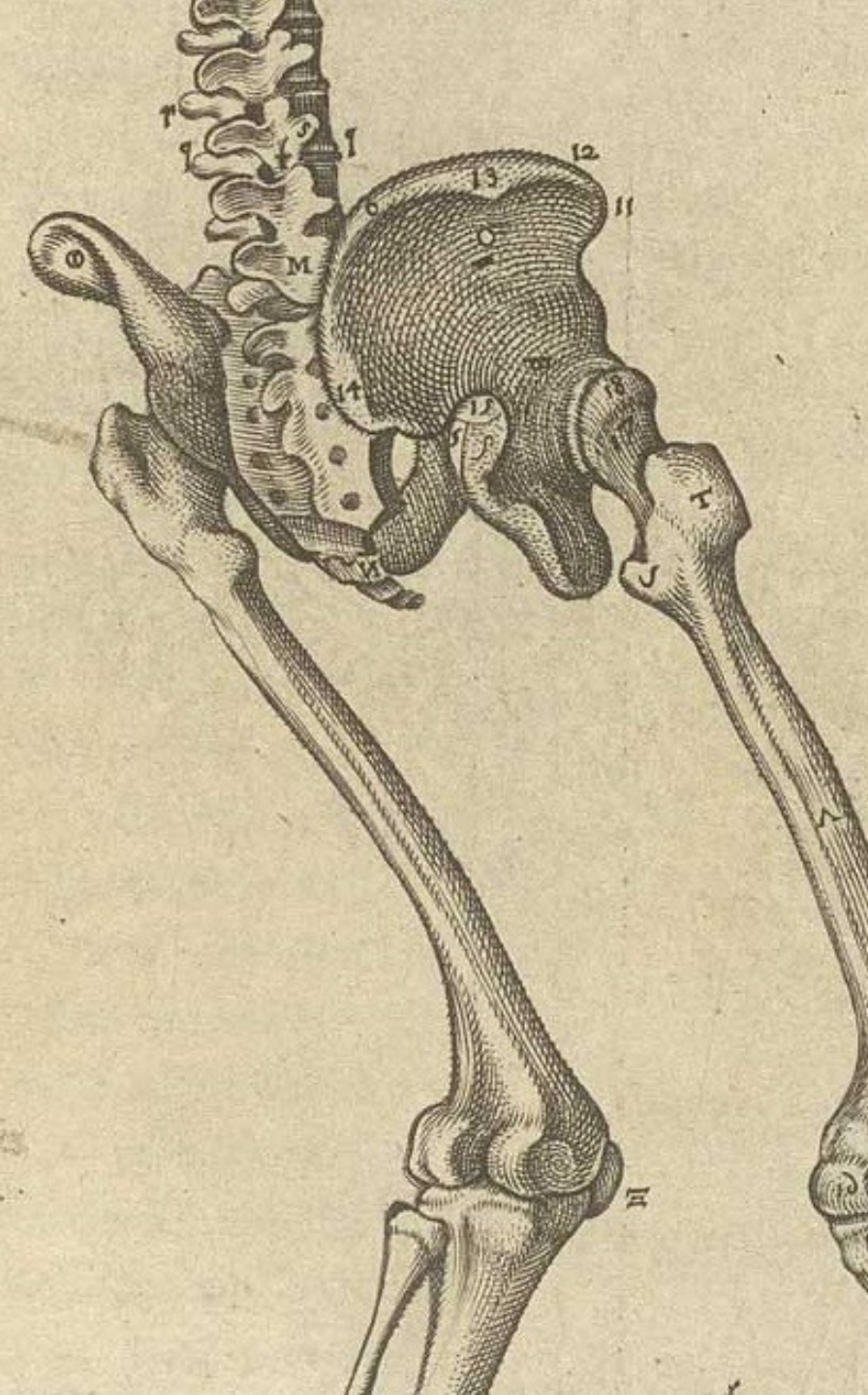


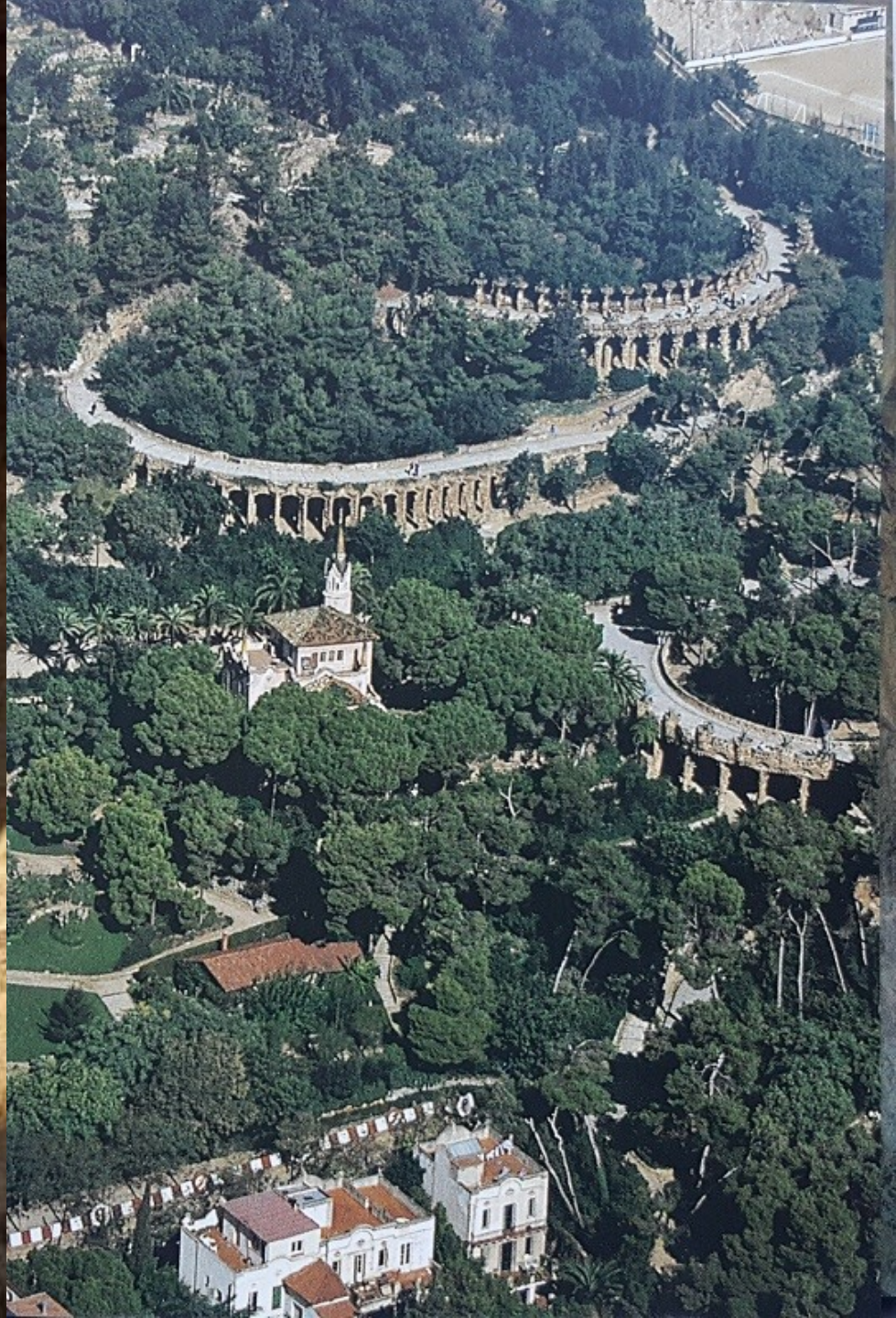












































































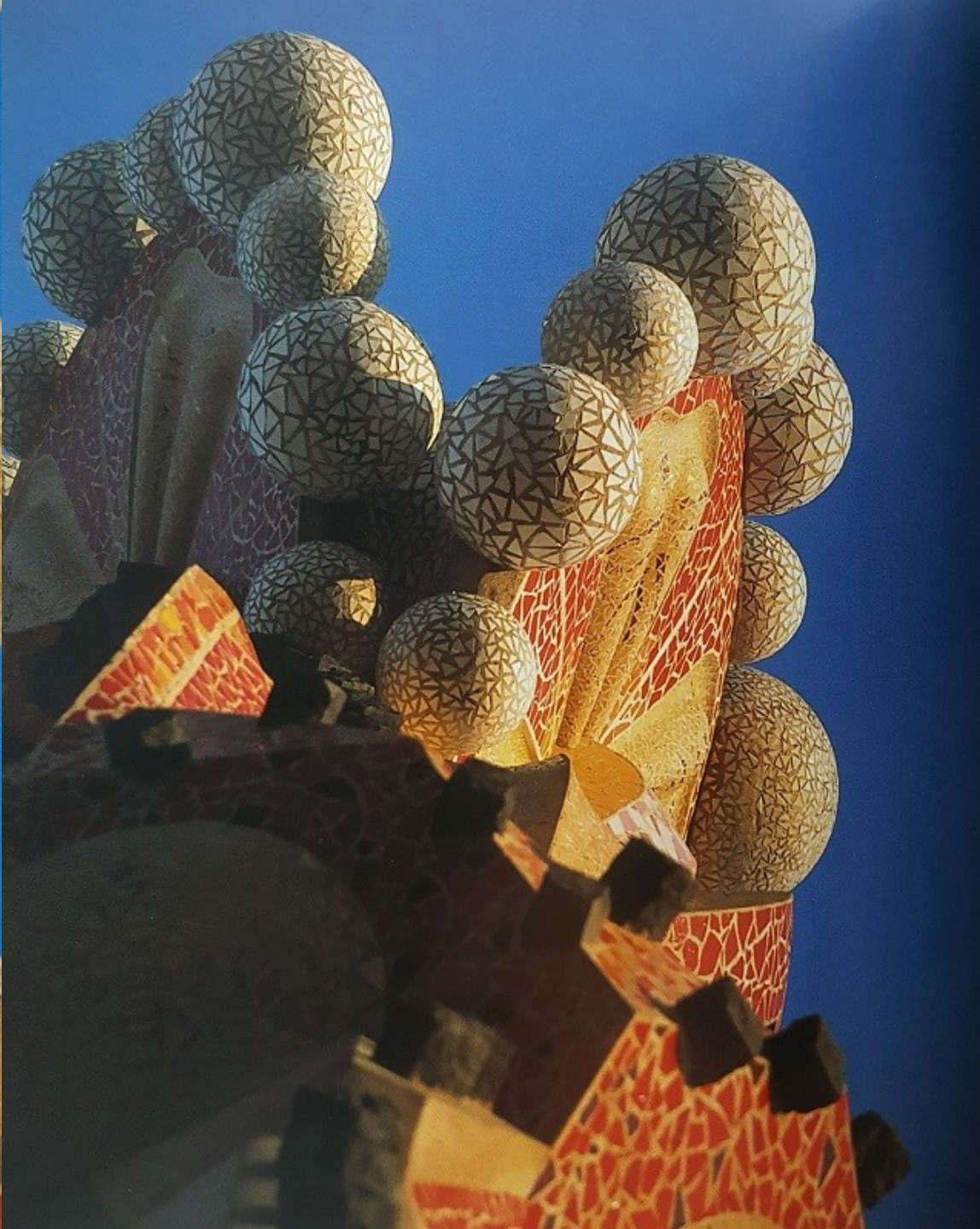












How would Gaudí want the Sagrada Família to be completed?



#1: With the same Materials and Methods used by Gaudí.



#2: With Modern Materials and Methods finished to look like Gaudí's original design.



#3: With Modern Materials and Methods expressed honestly in a new finish.

