

# The Architecture of Antoni Gaudí

## Lecture 1: Parabolic Arc (2020.06.29)

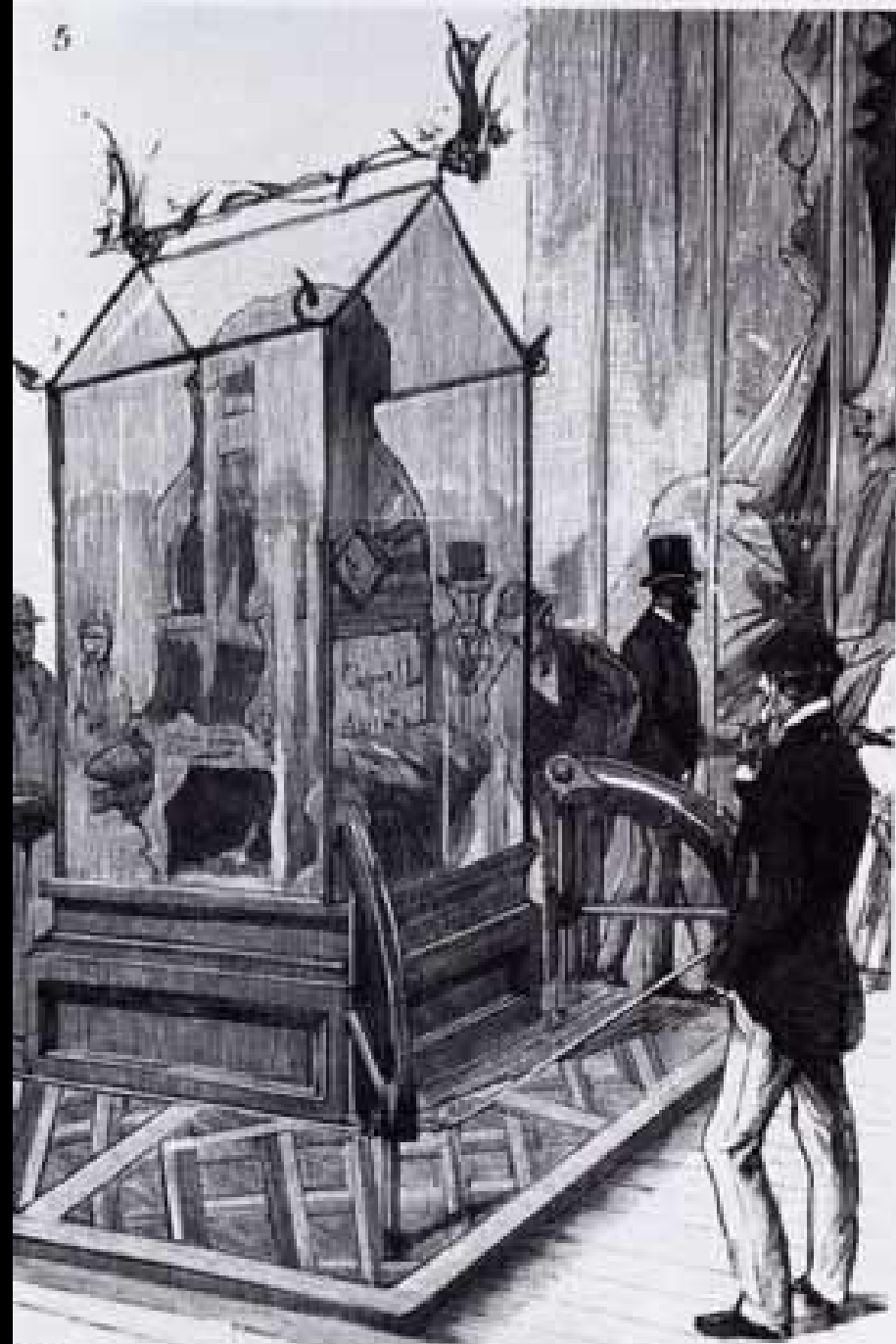
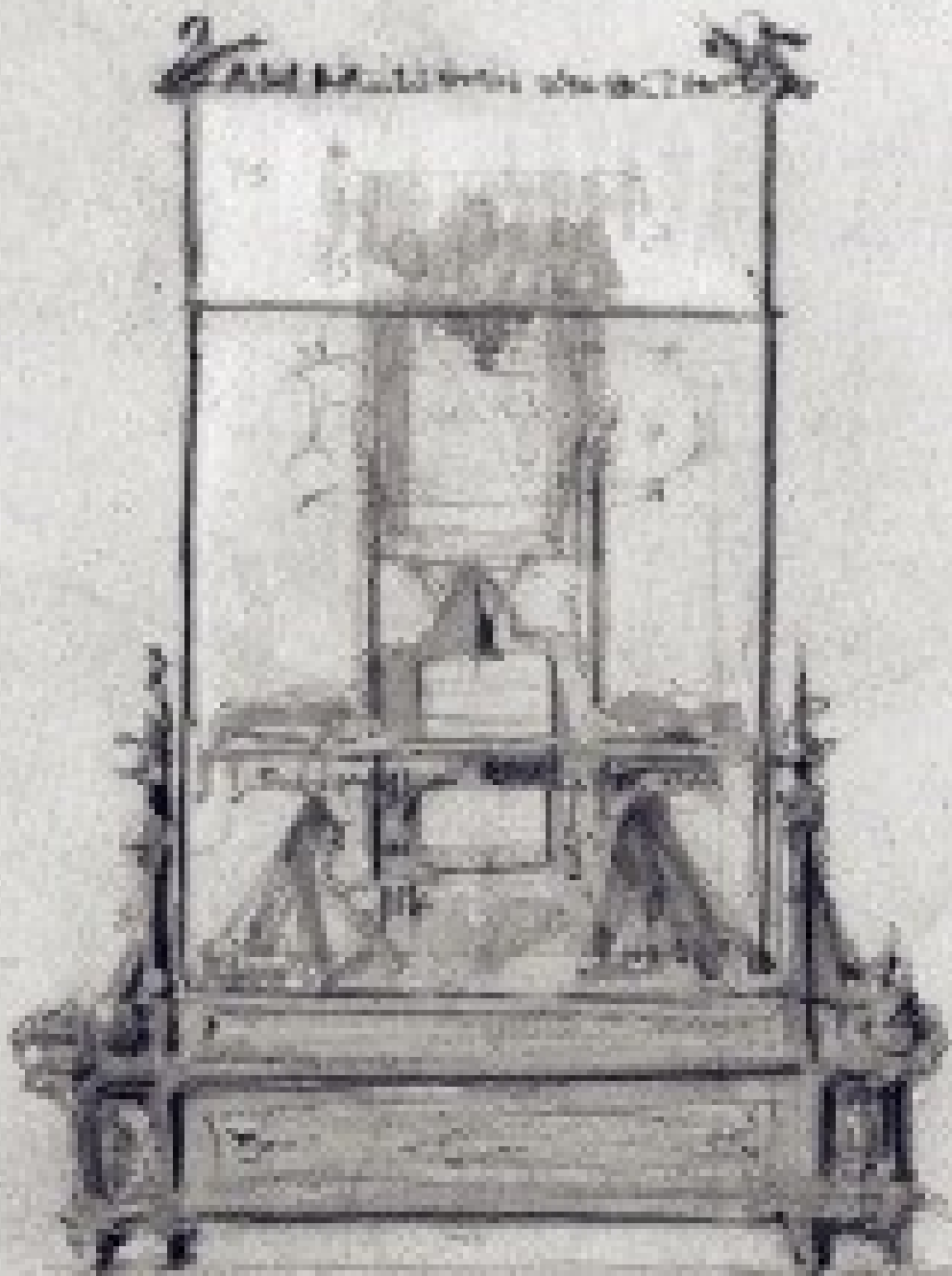
Osher Lifelong Learning Institute  
Carnegie Mellon University  
Matthew Schlueb, Instructor



































Cooperativa

Mataronense







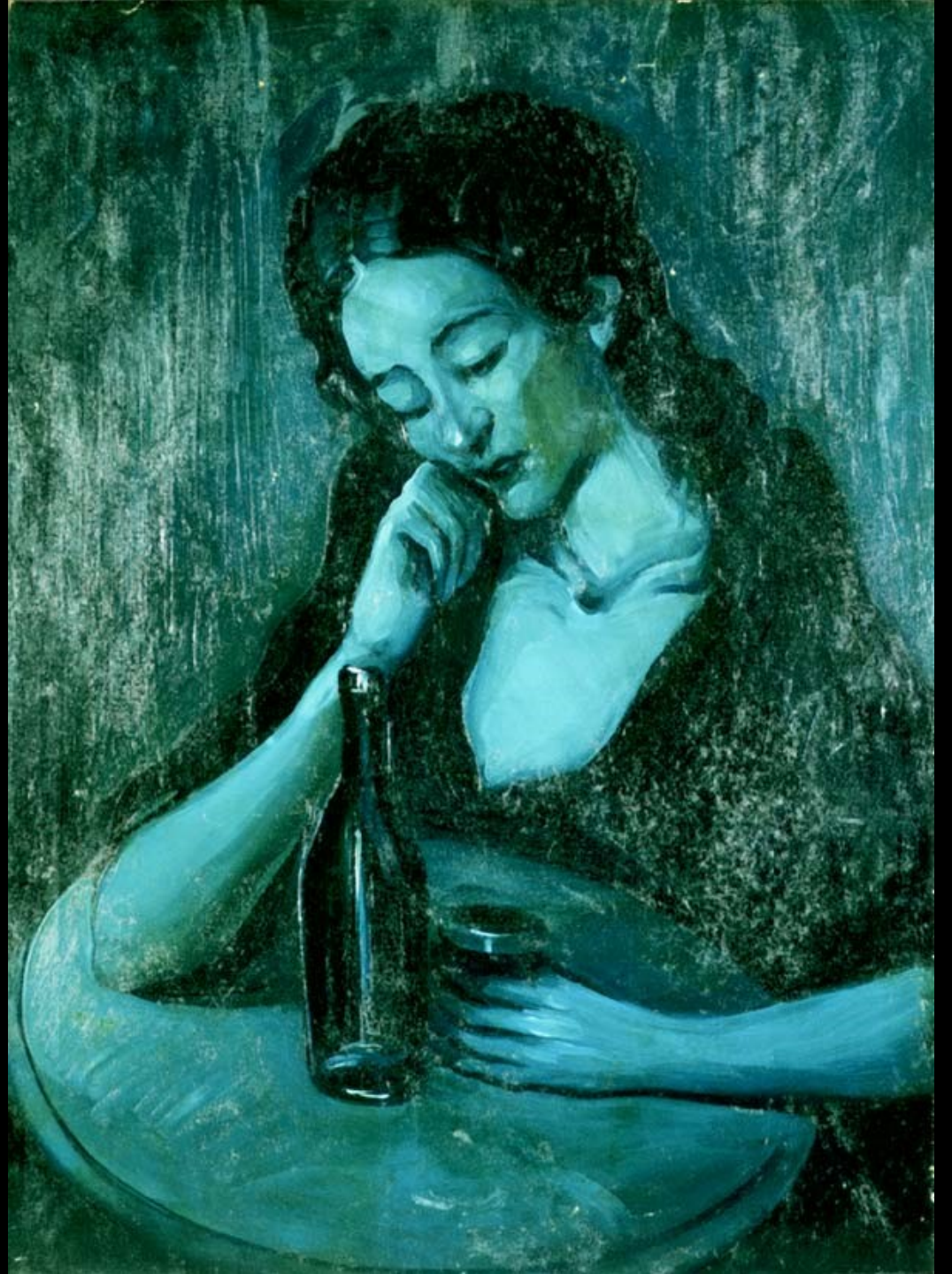








P. Picasso

















































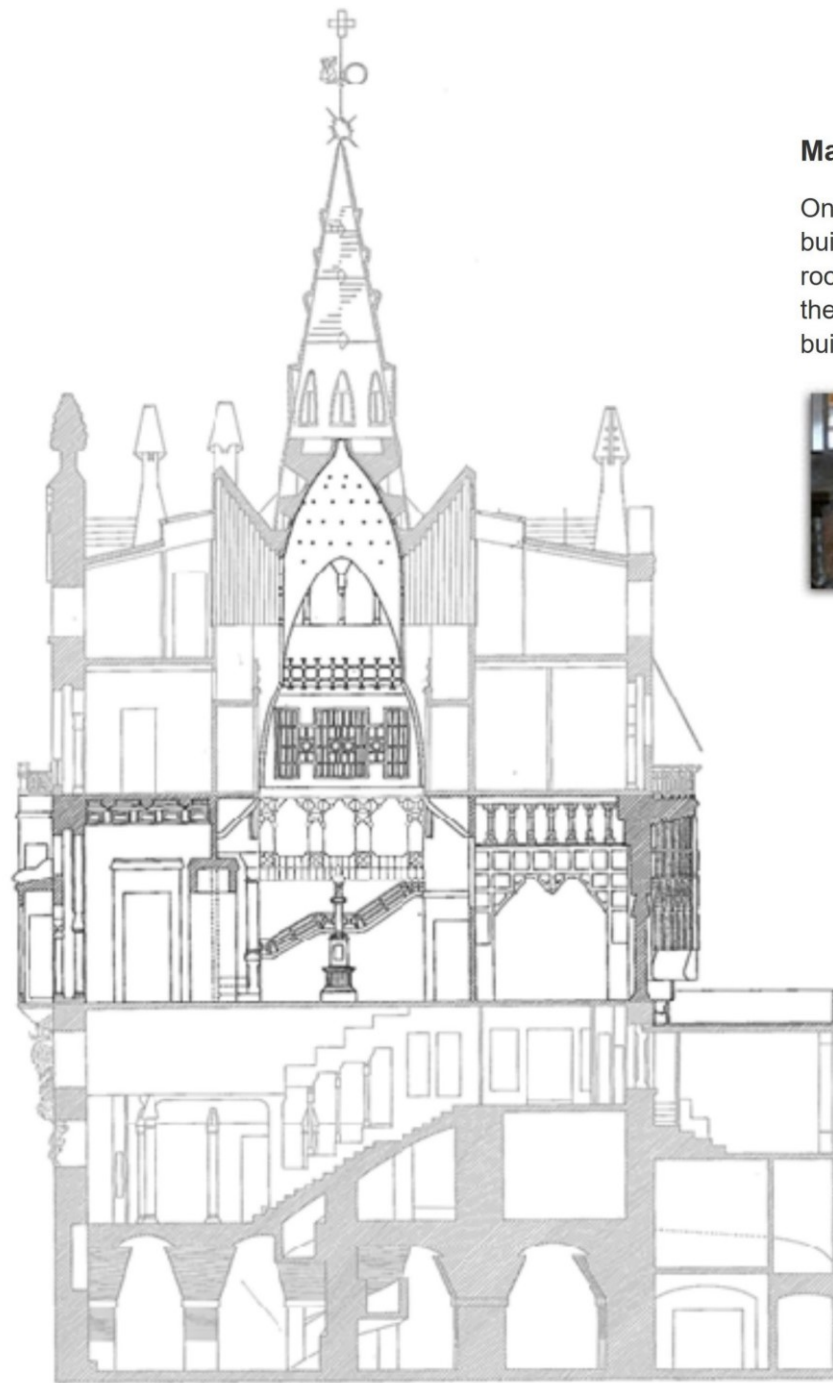


### Ground Floor

Entrance to the Güell Palace was through double doors from the street. The doorman and coachman services were carried out from the ground floor.







### Main Floor

Once we reach the main floor, the building starts to resemble a palace. The rooms on this floor are on either side of the central hall, which is as high as the building.





















### Rooftop

The roof is one of Güell Palace's magical corners and is outstanding for its twenty chimneys and central spire, which is 15 metres high.

















