

The image shows the interior of the Sagrada Família in Barcelona, designed by Antoni Gaudí. The architecture is characterized by its organic, tree-like structure with thick, tapering columns that branch out at the top to support the ceiling. The space is filled with light from various stained glass windows, creating a warm and ethereal atmosphere. The perspective is from a high vantage point, looking down the central aisle towards the altar.

**Antoni Gaudí's Influence on the
Contemporary Architecture of
Barcelona and Bilbao**

**OLLI at PITT - Lecture 3
Estereostàtic (2020.06.04)
Matthew Schlueb, Instructor**



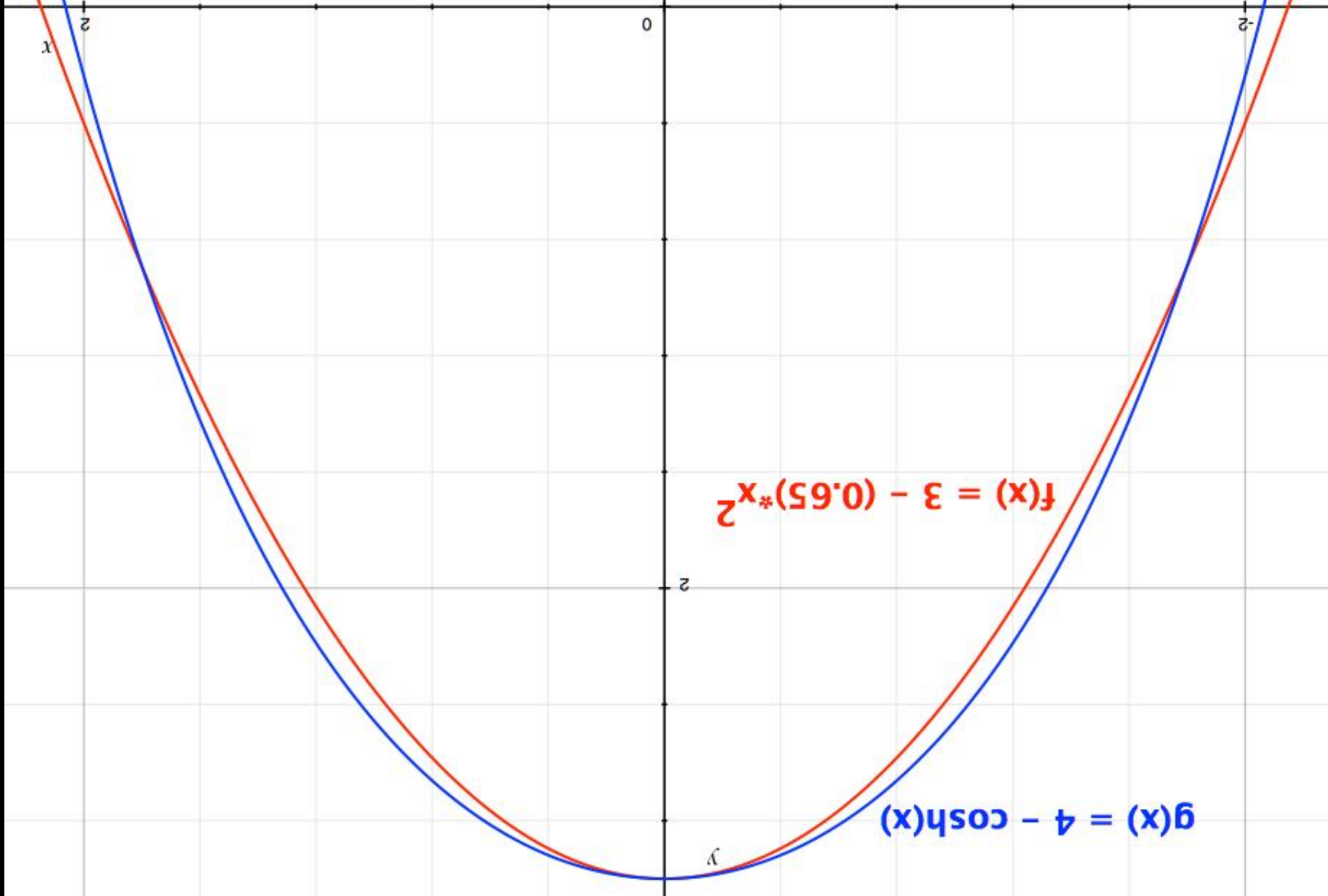


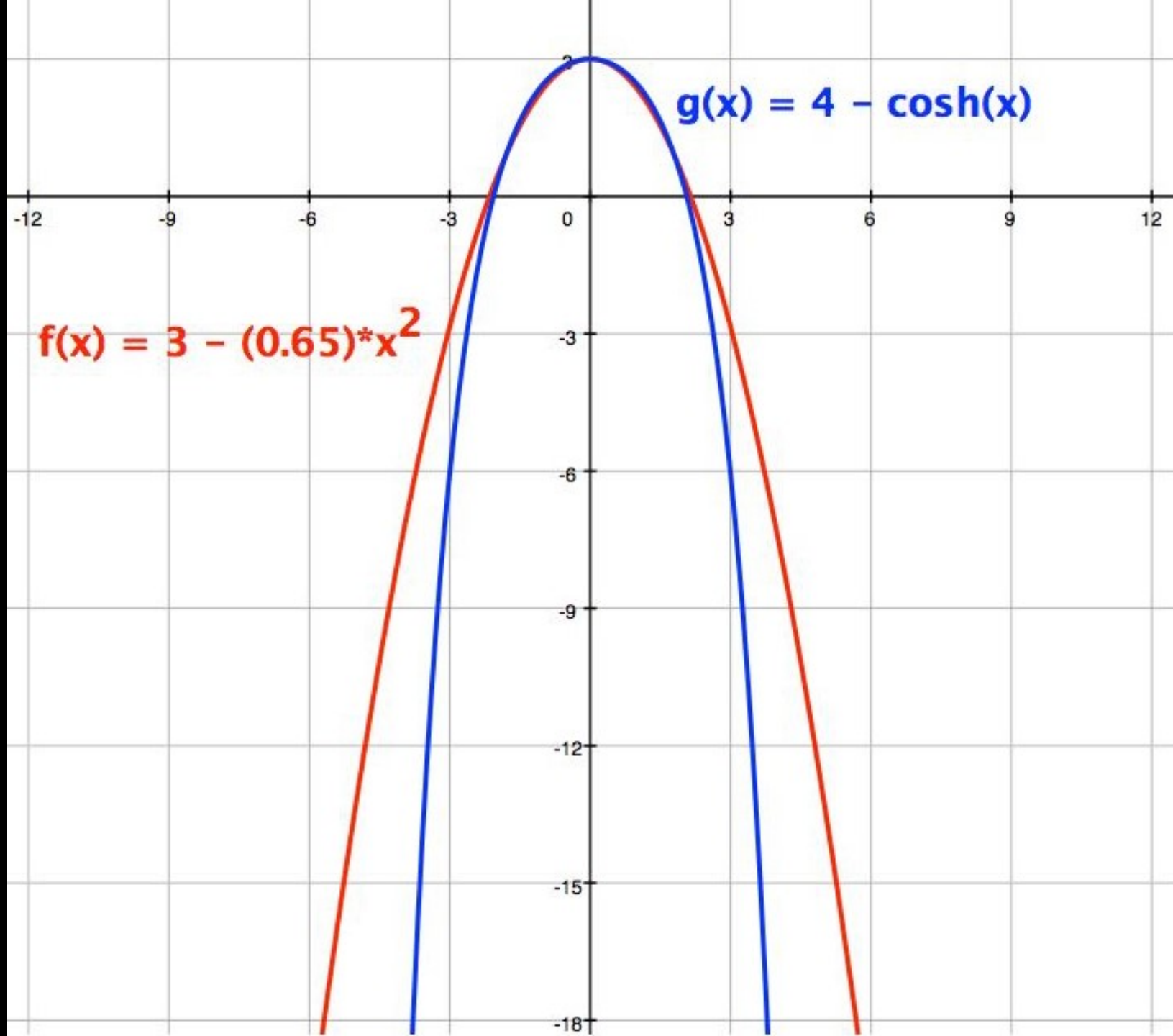




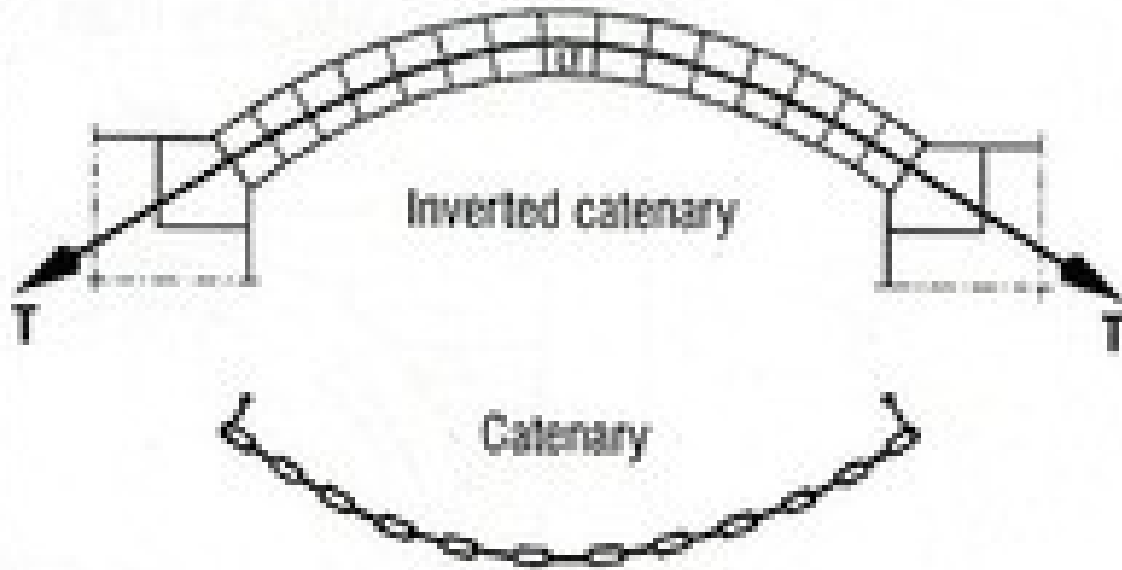








SEGMENTAL ARCH



CATENARY ARCH

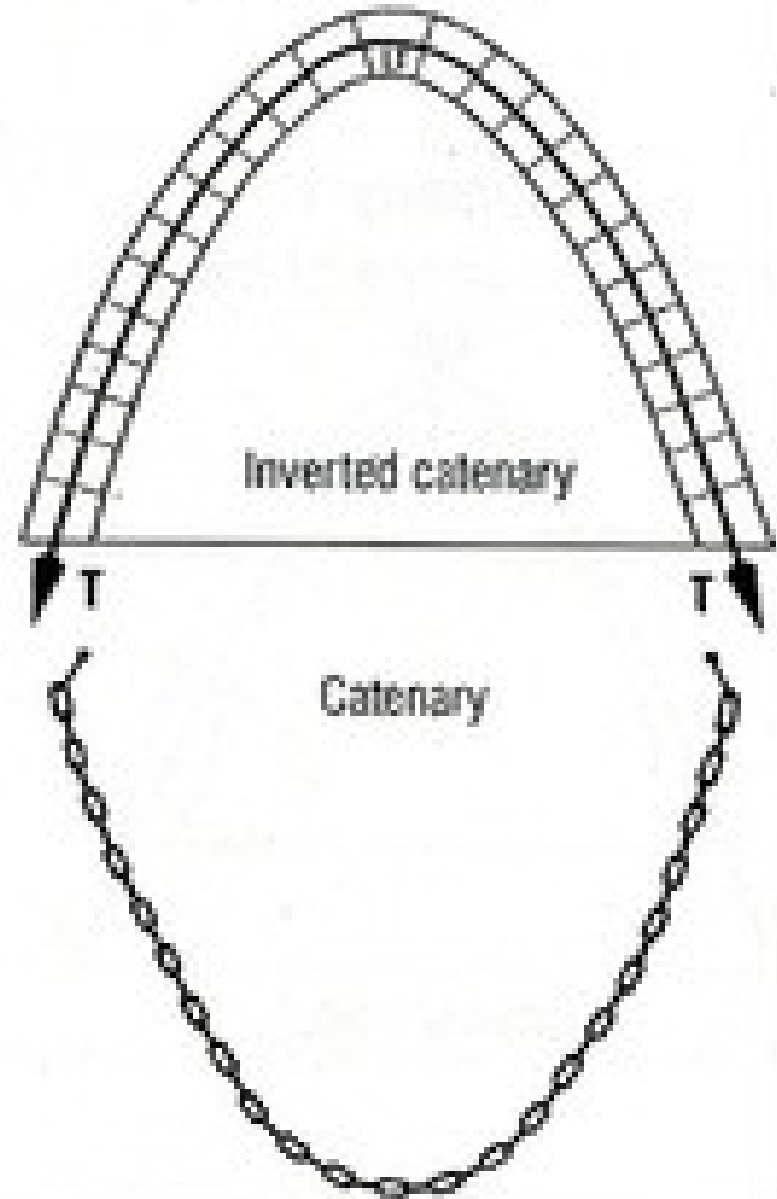
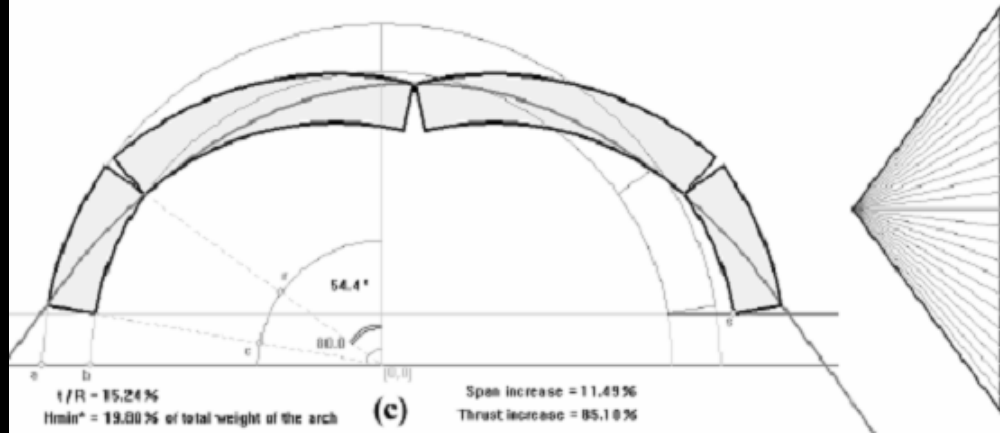
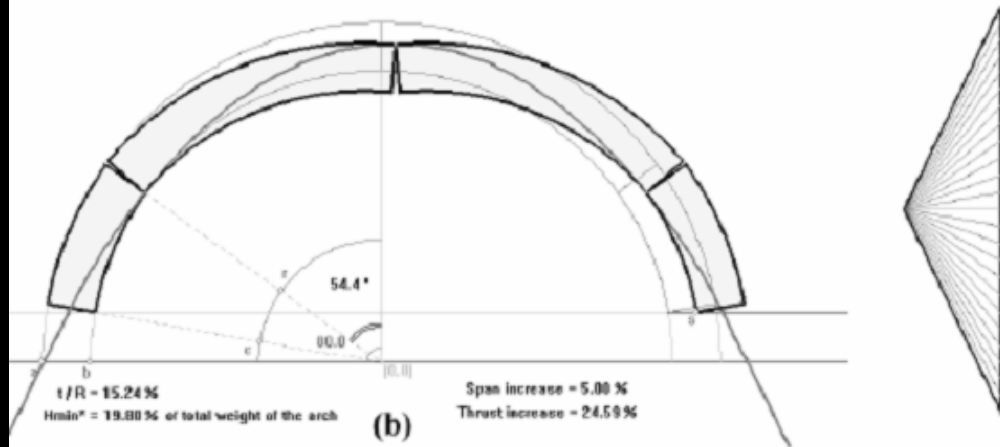
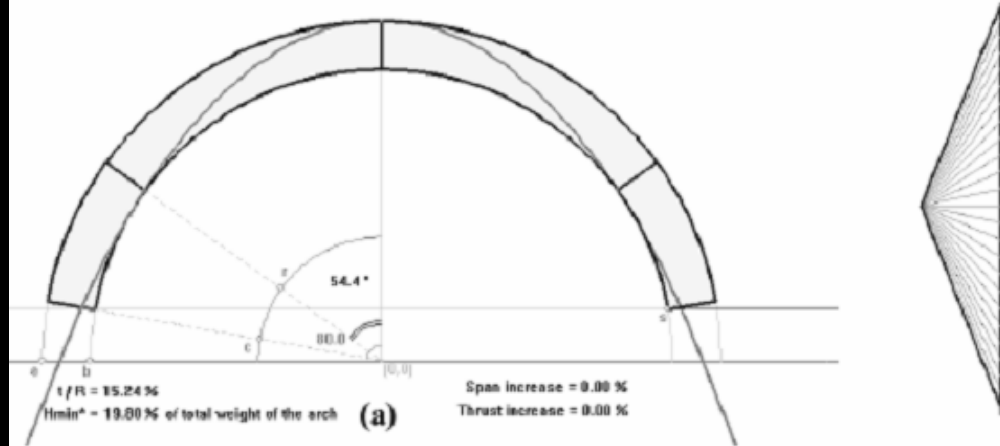
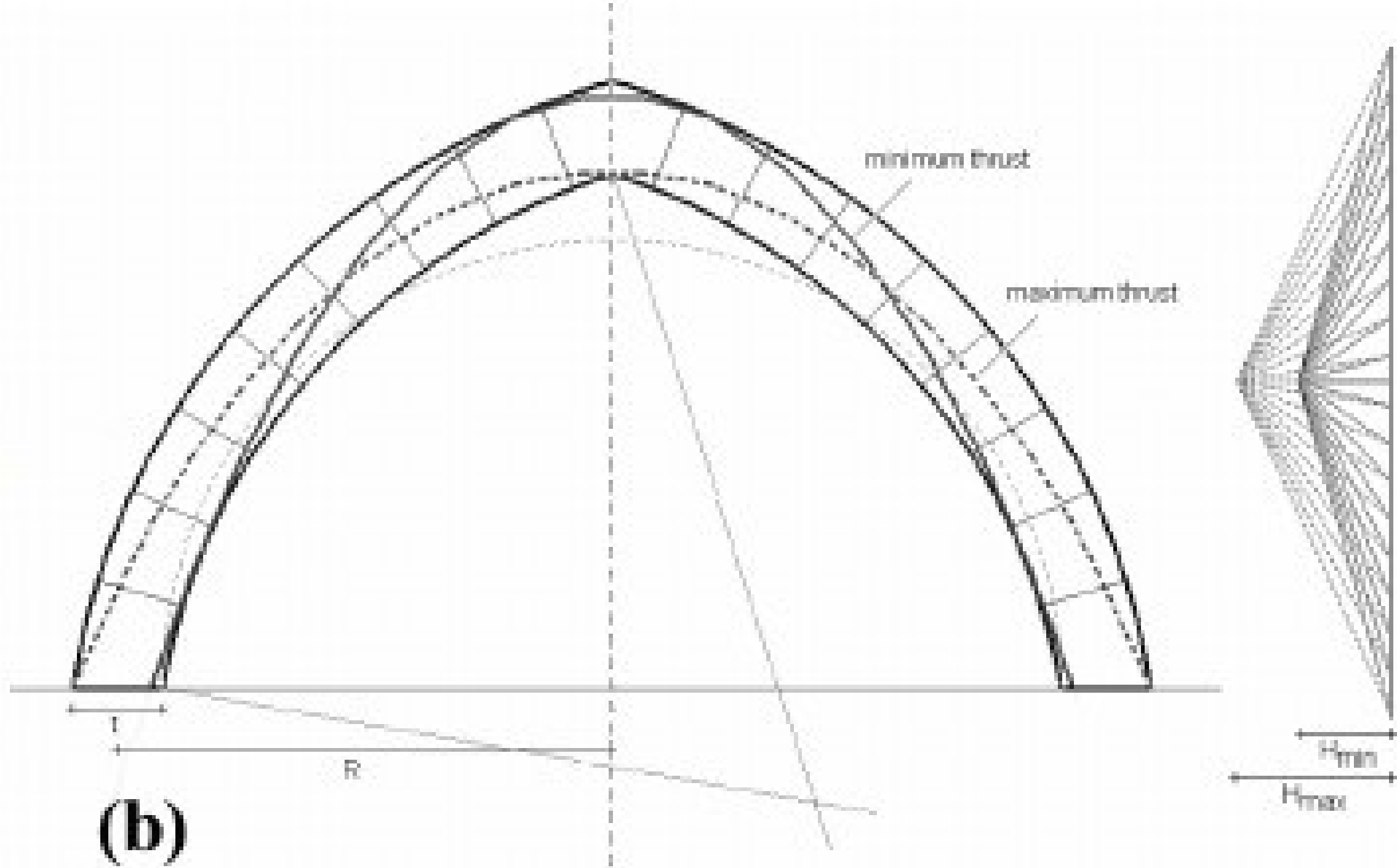
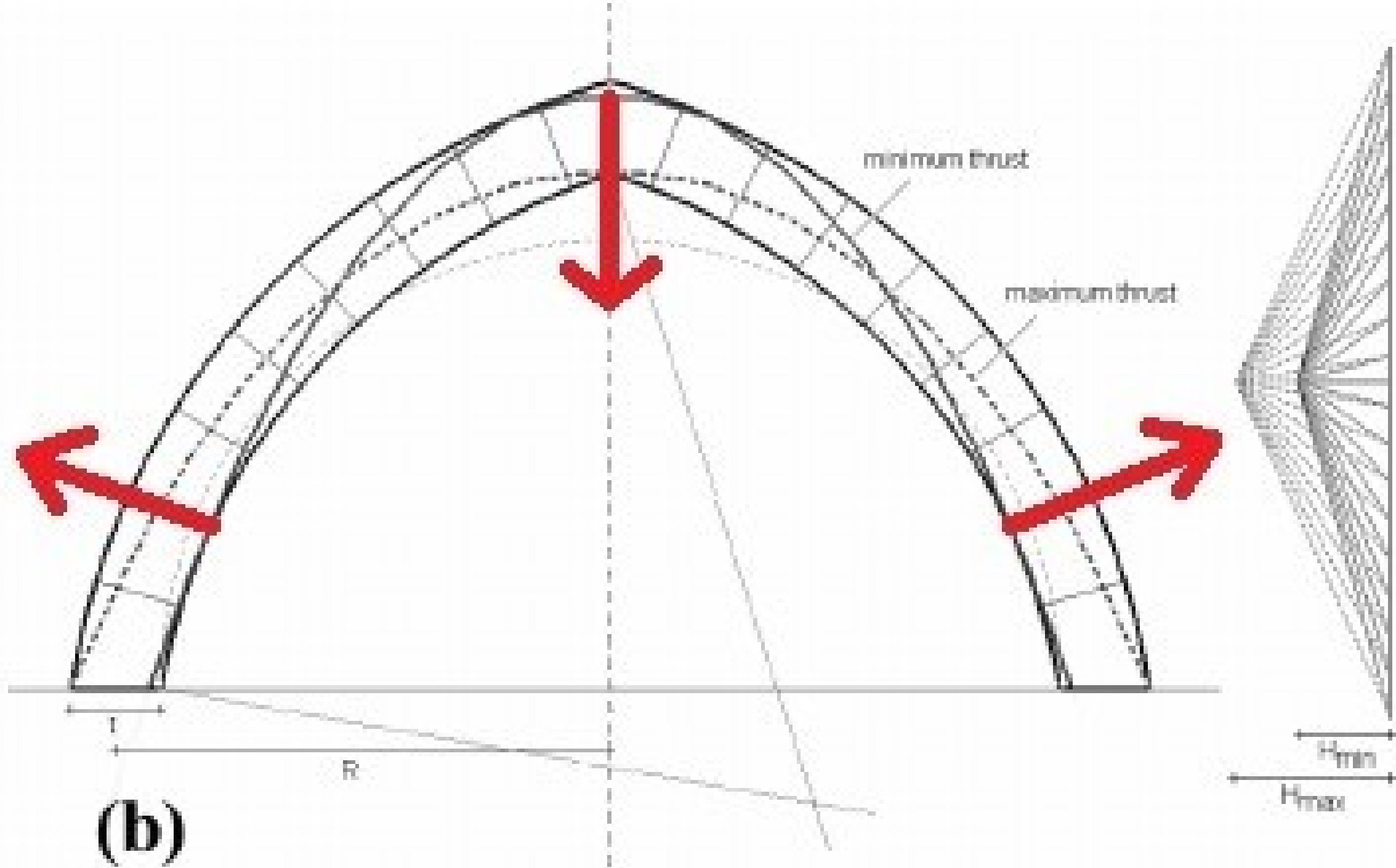
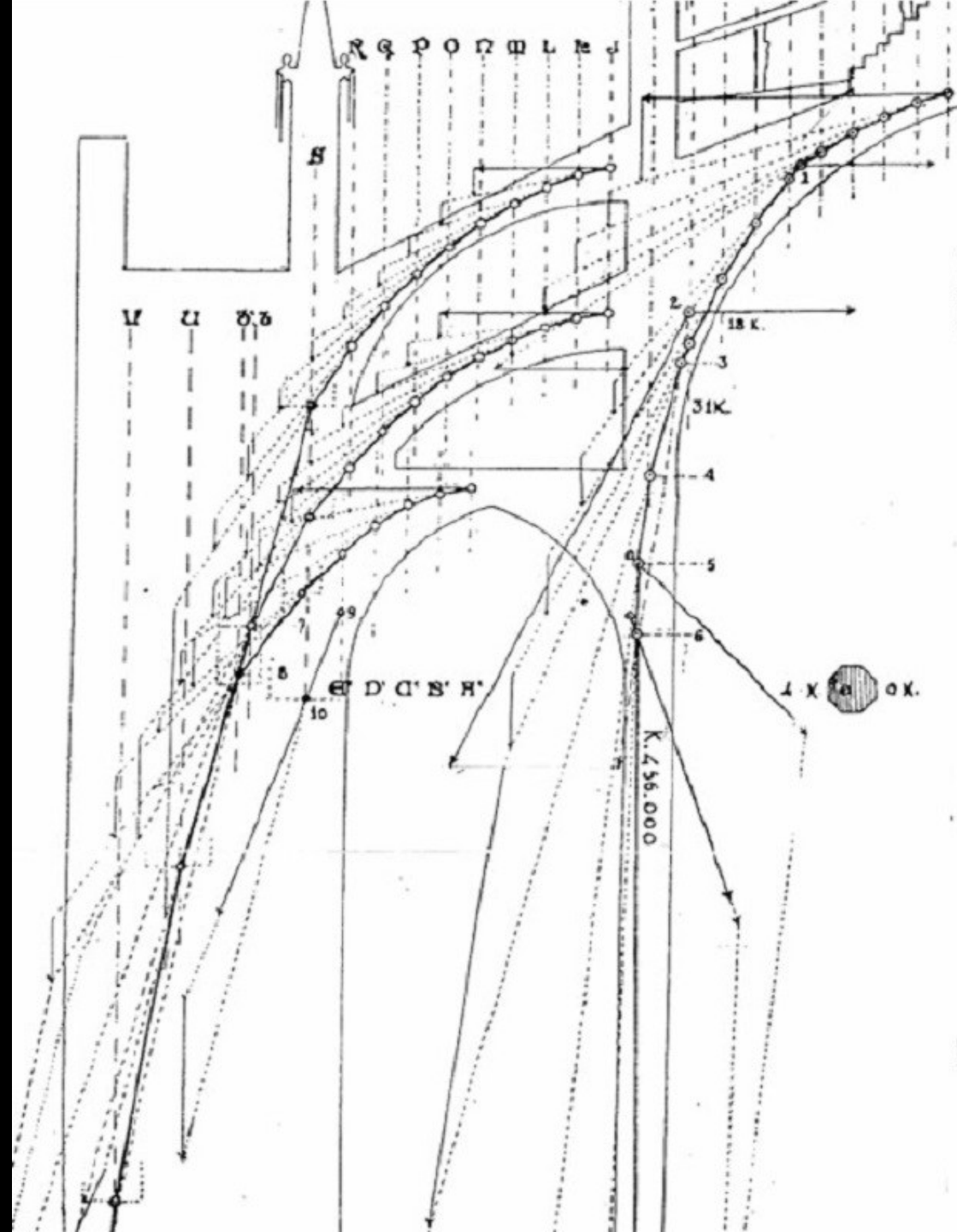


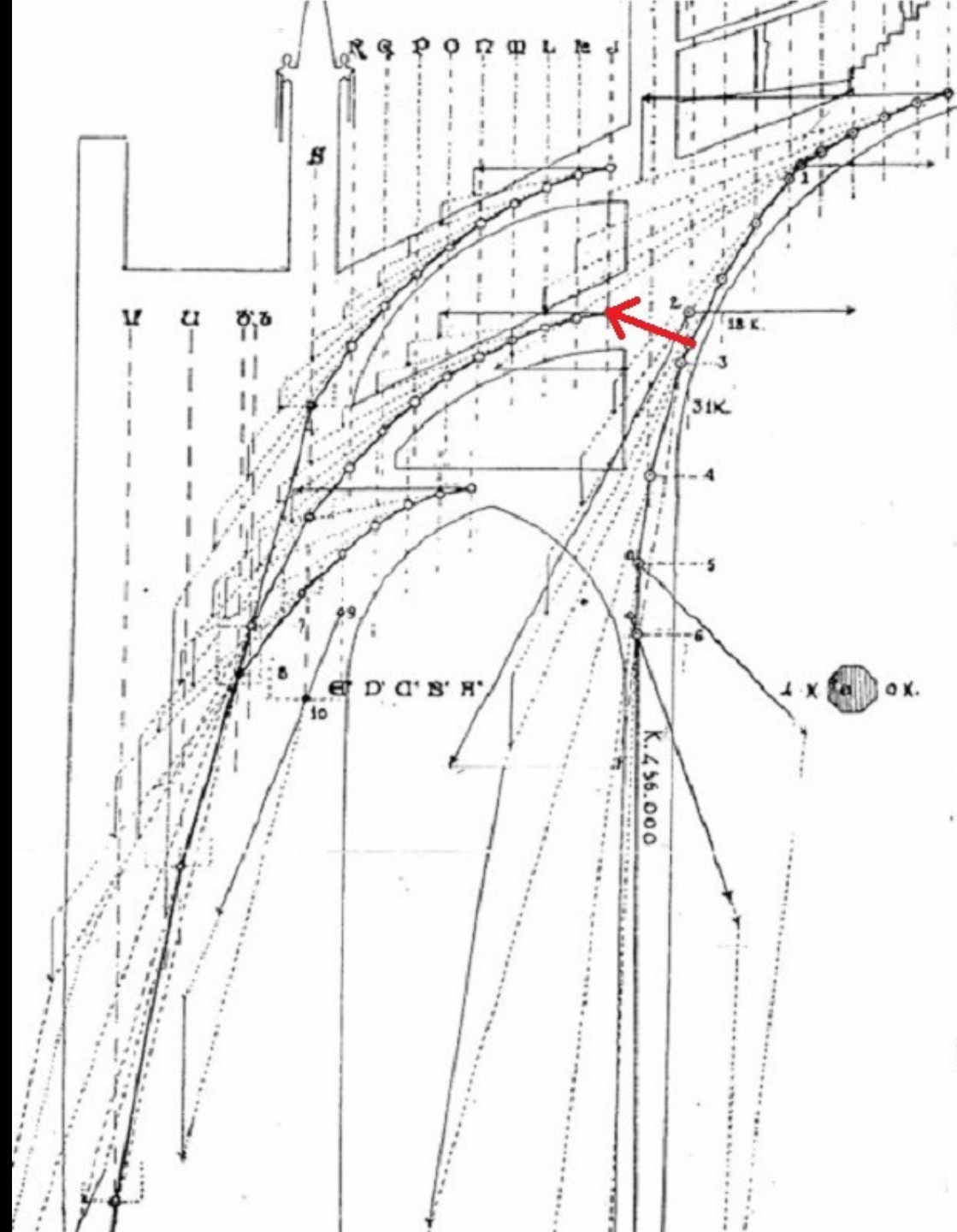
Fig.3- Catenary curves and arches

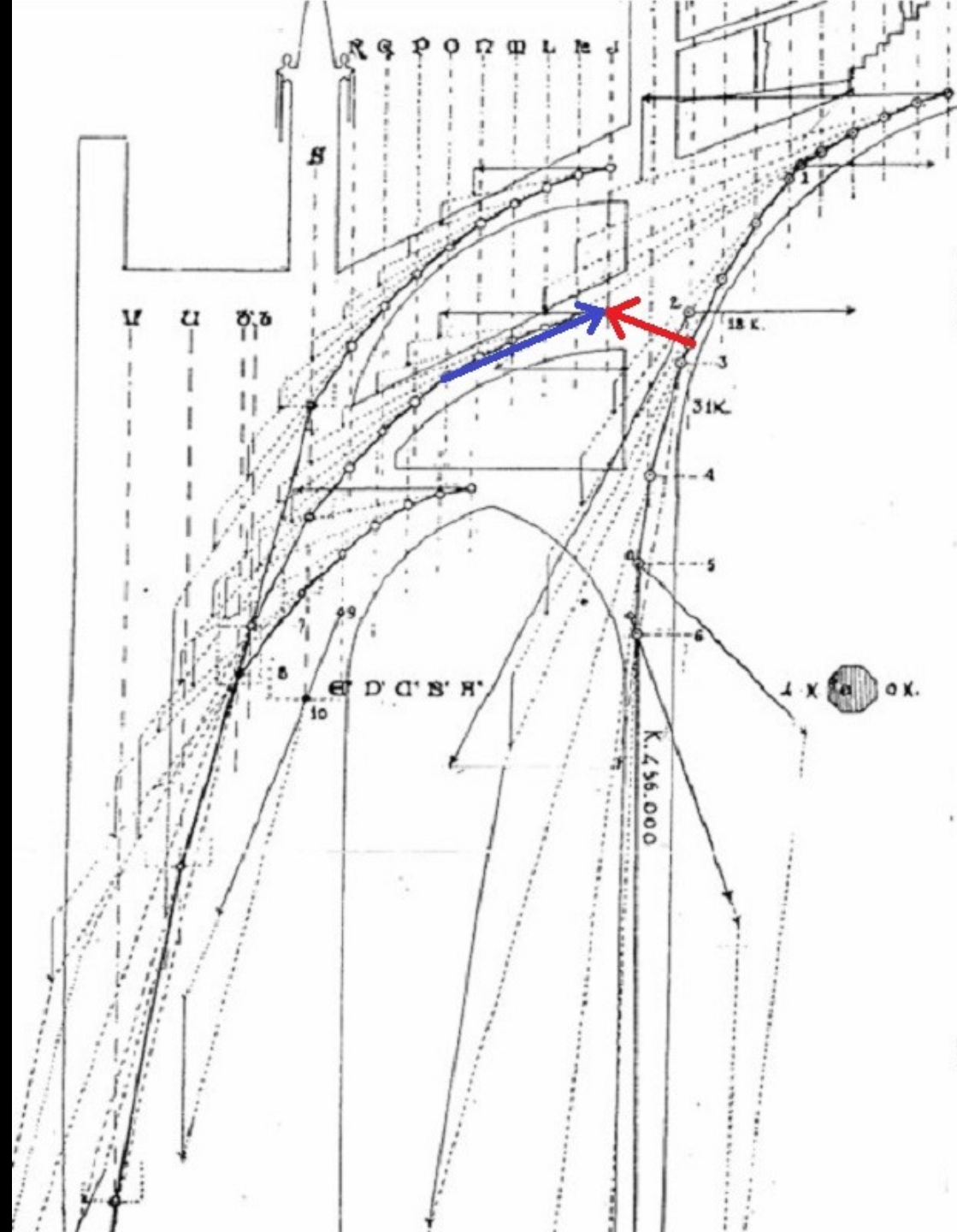










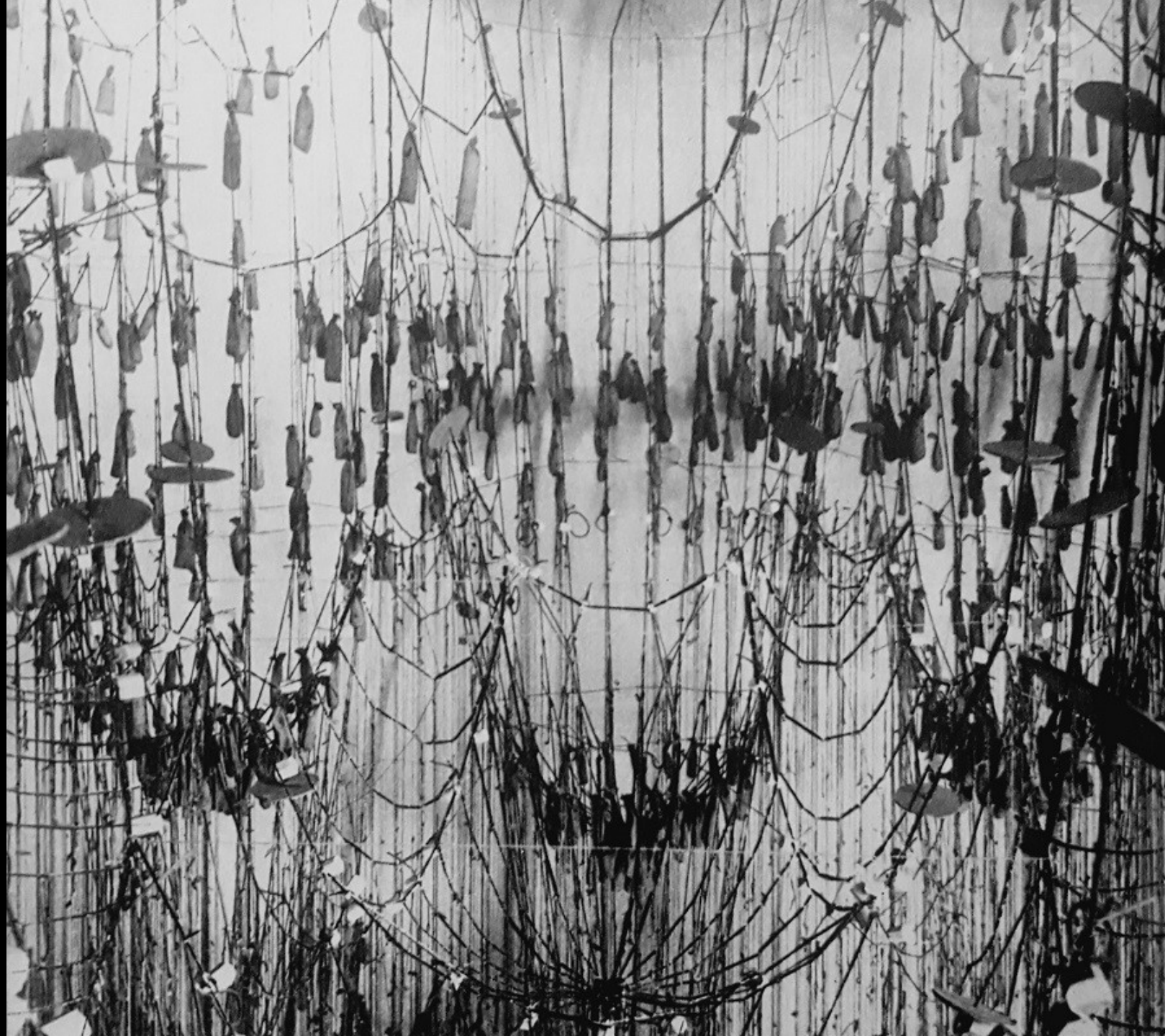


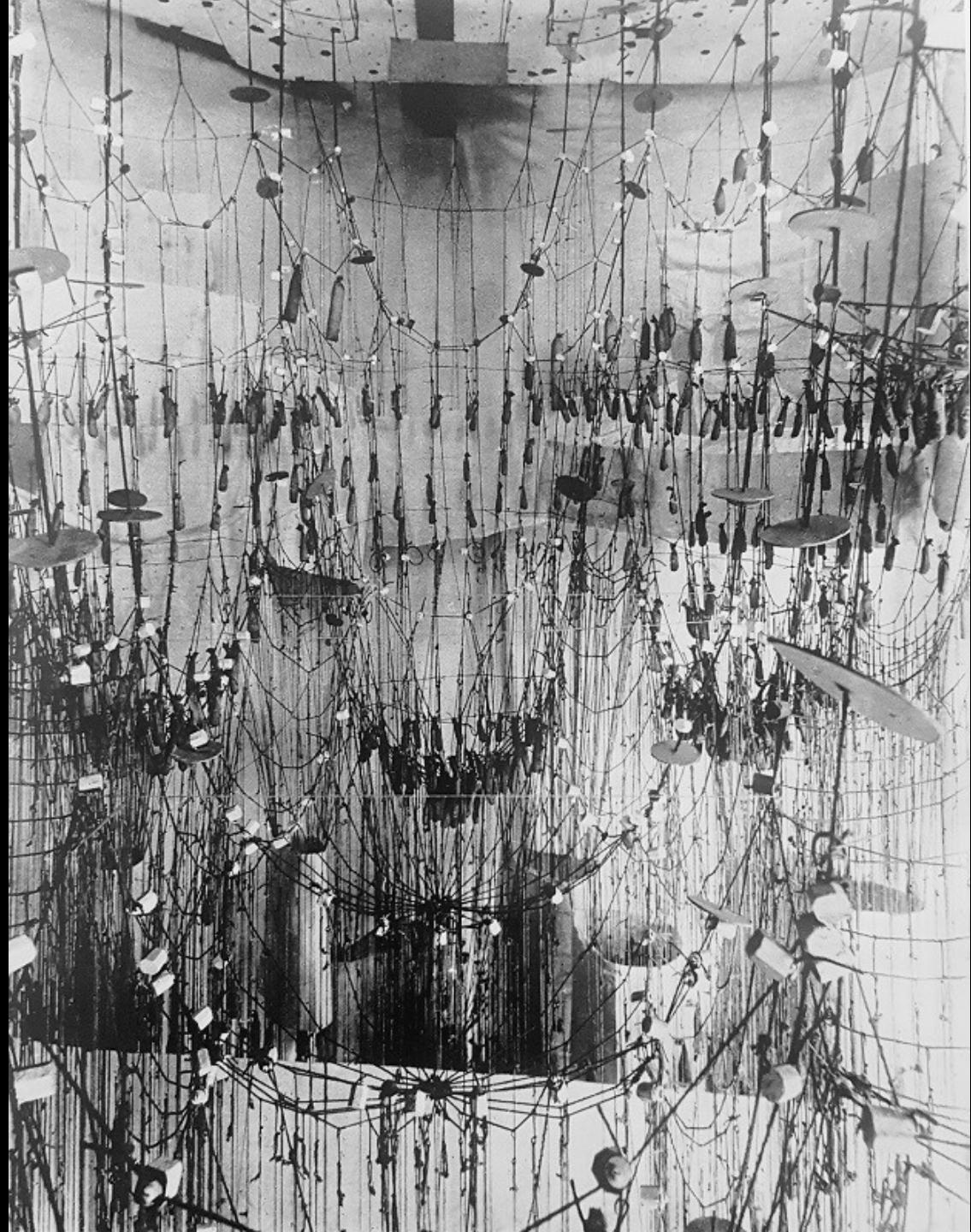


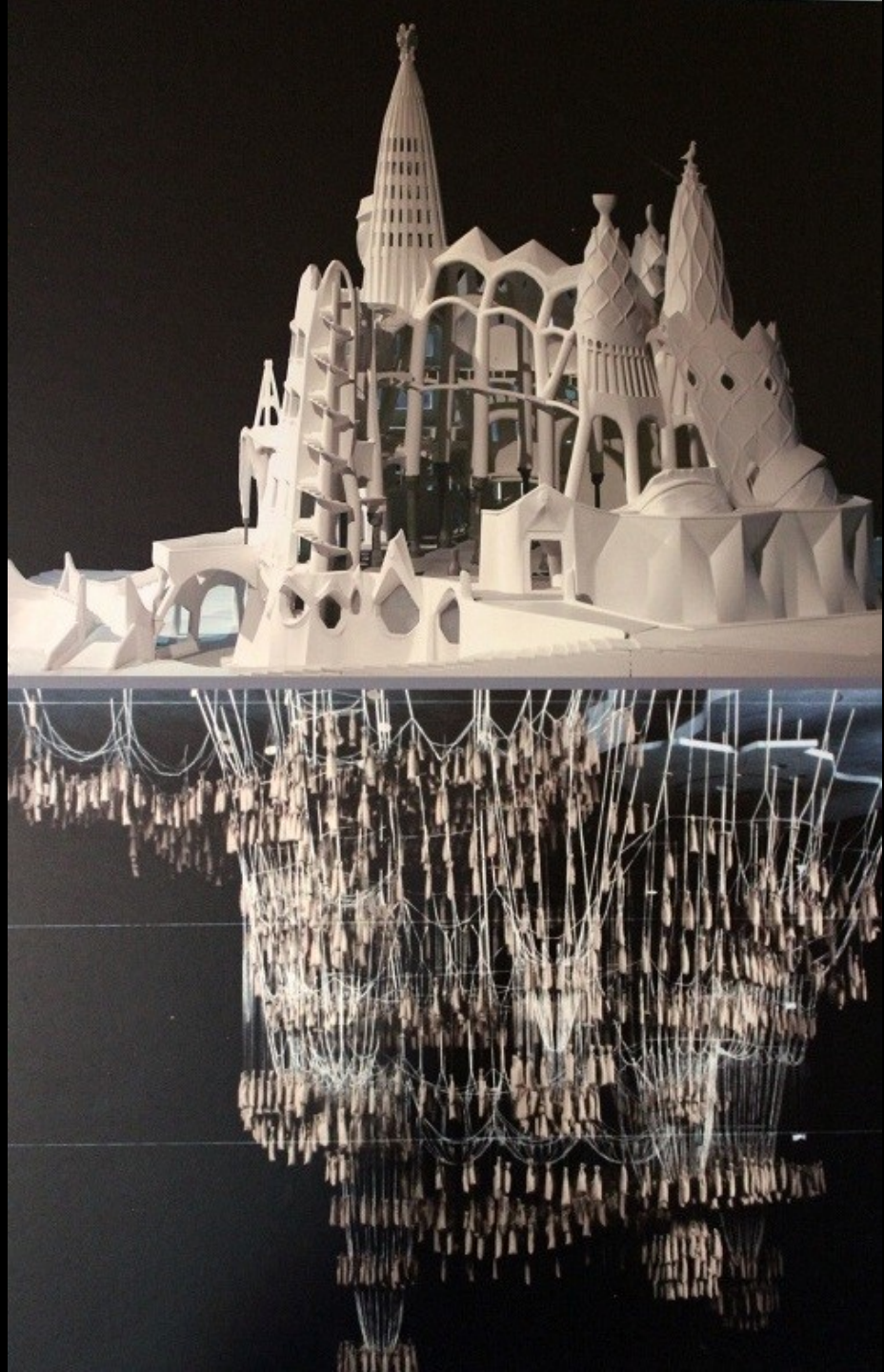






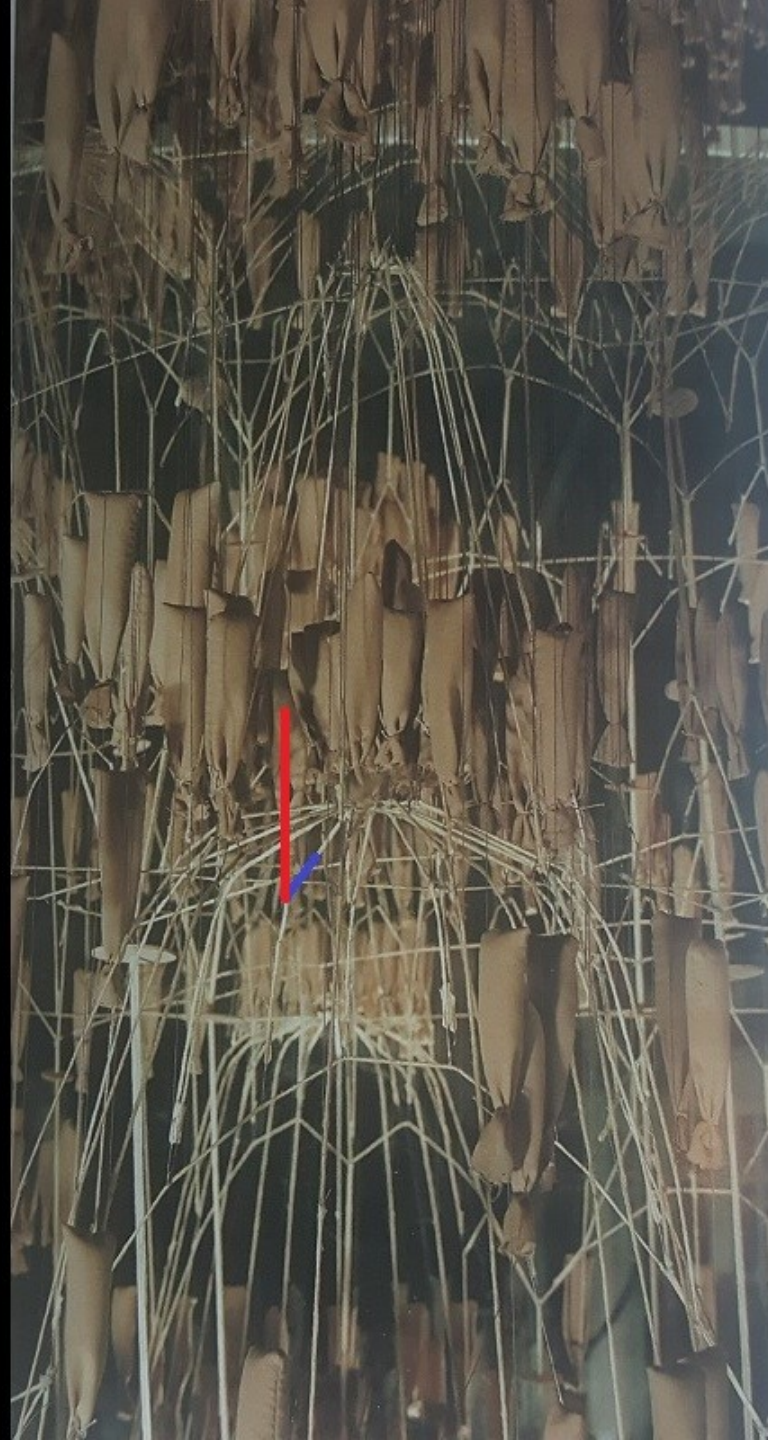


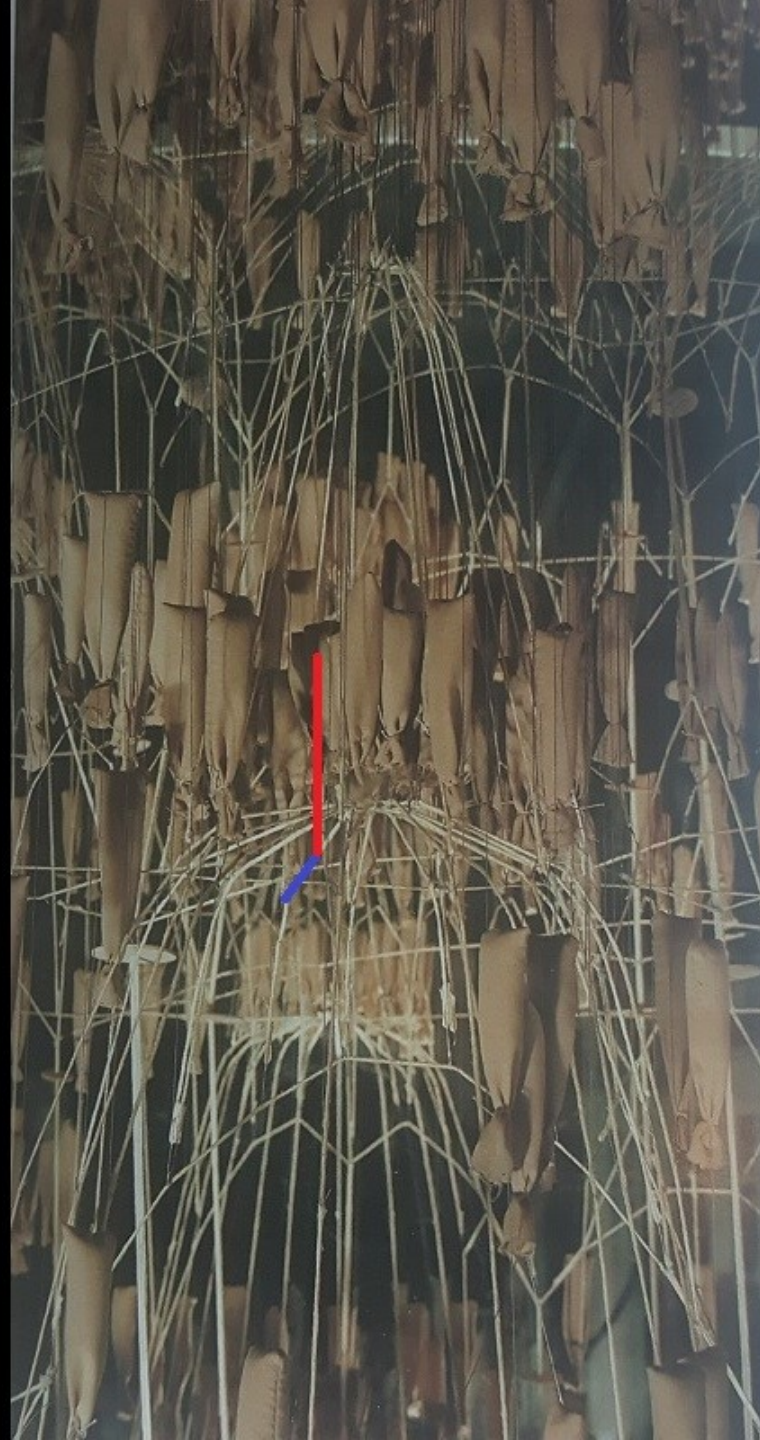


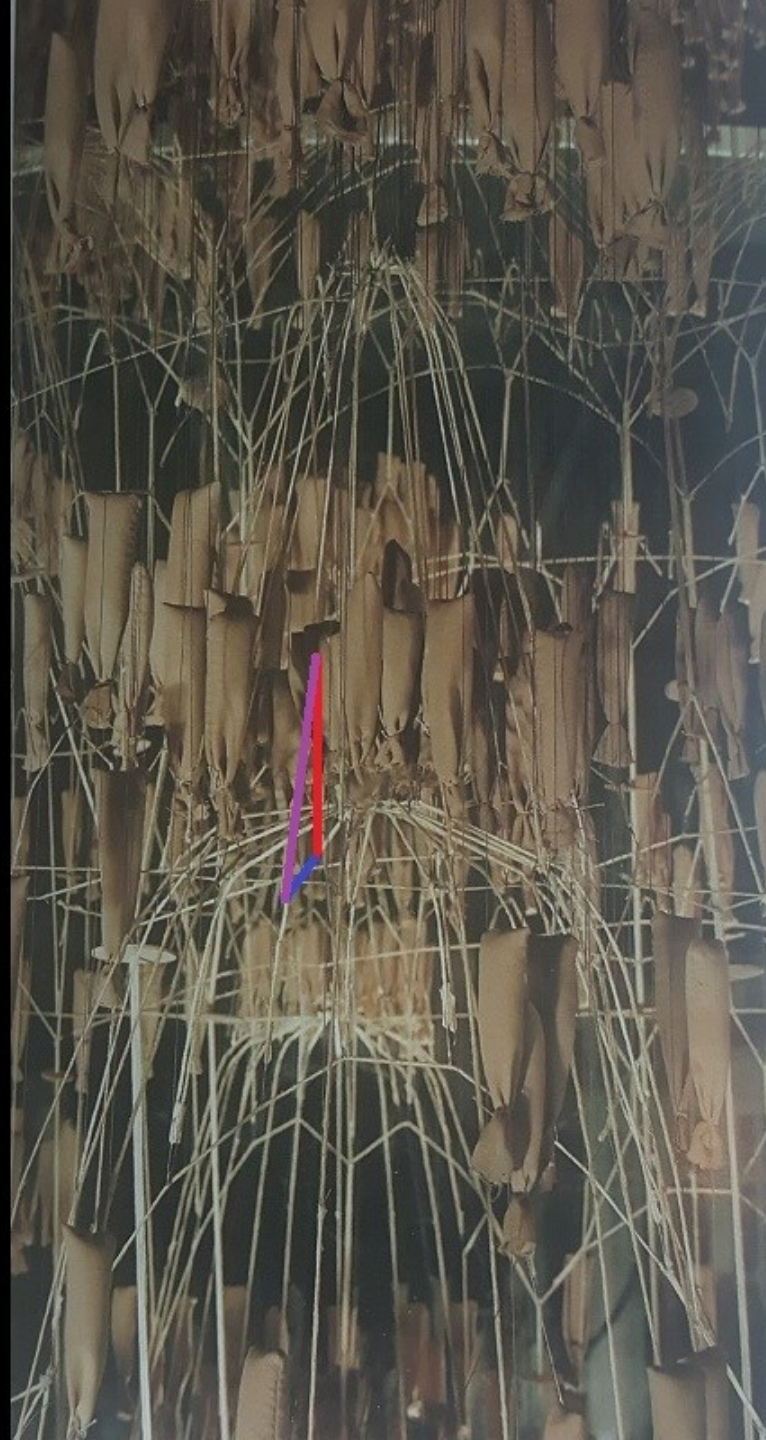


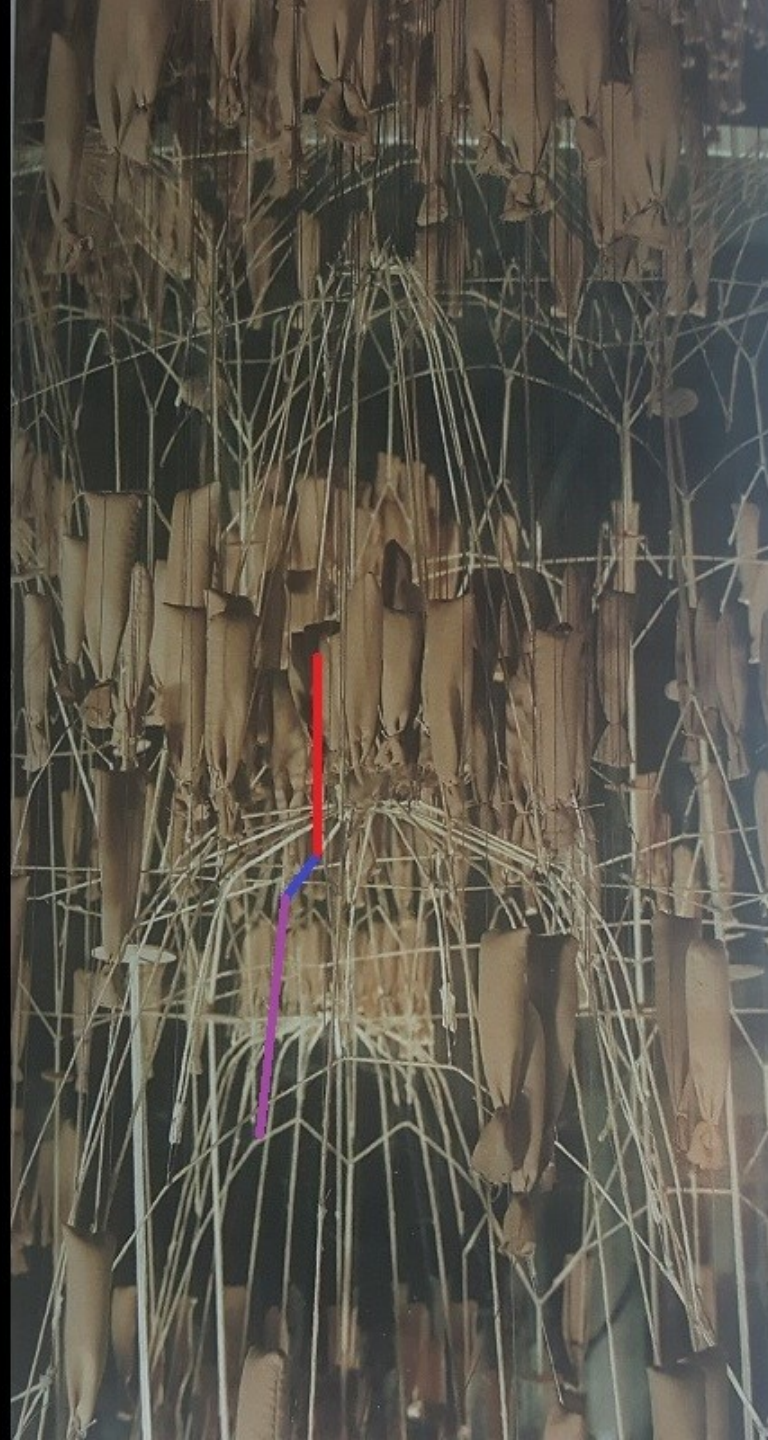


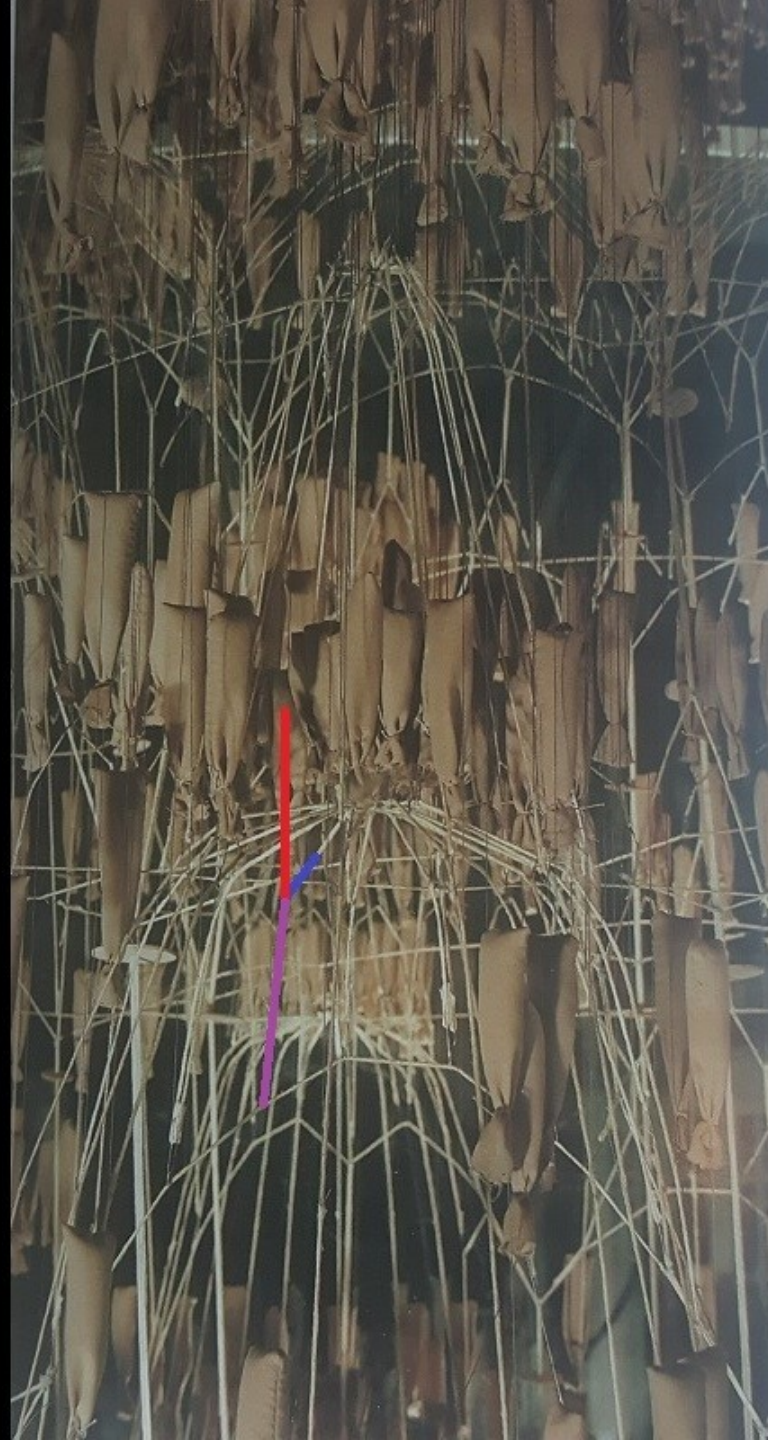


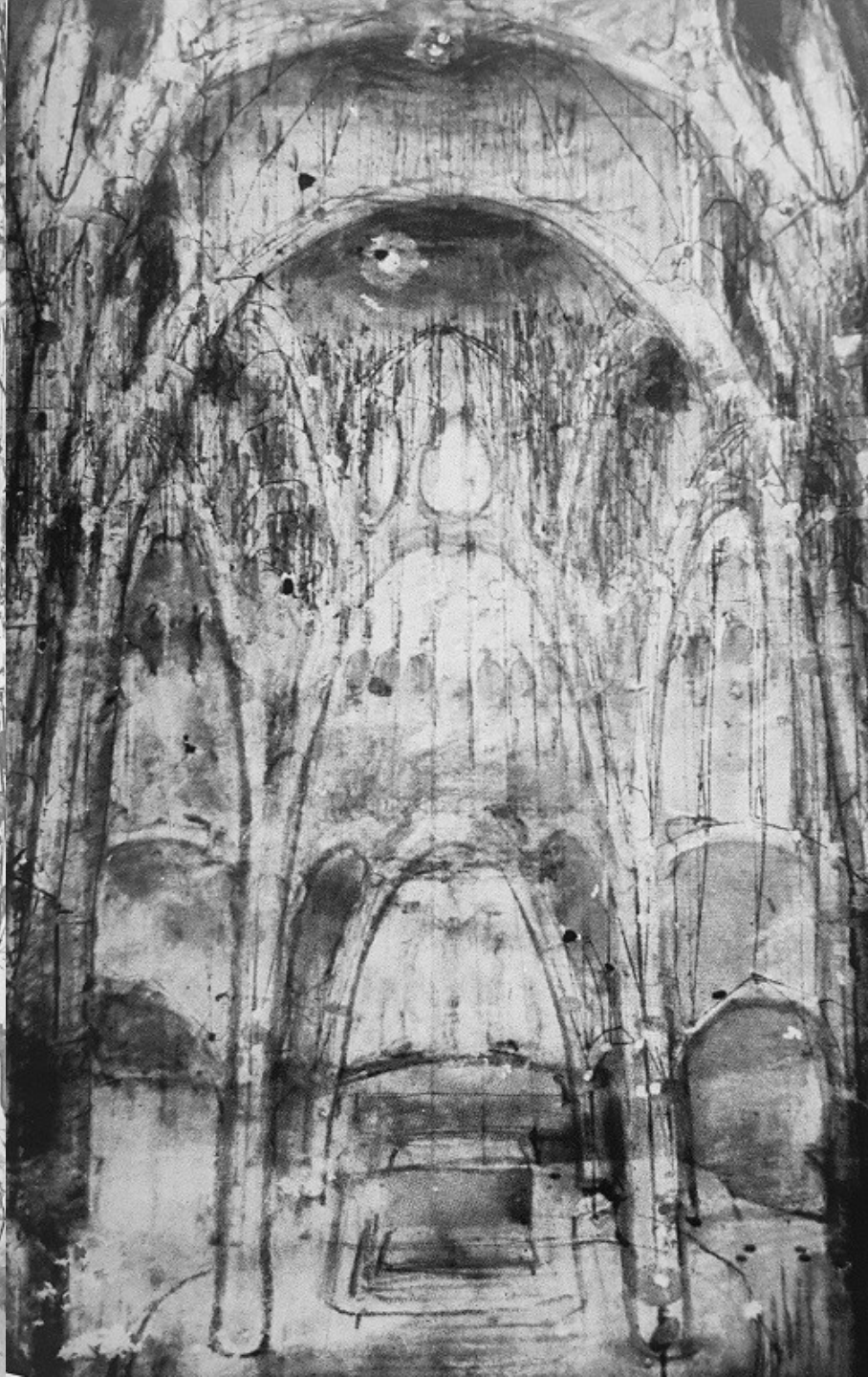






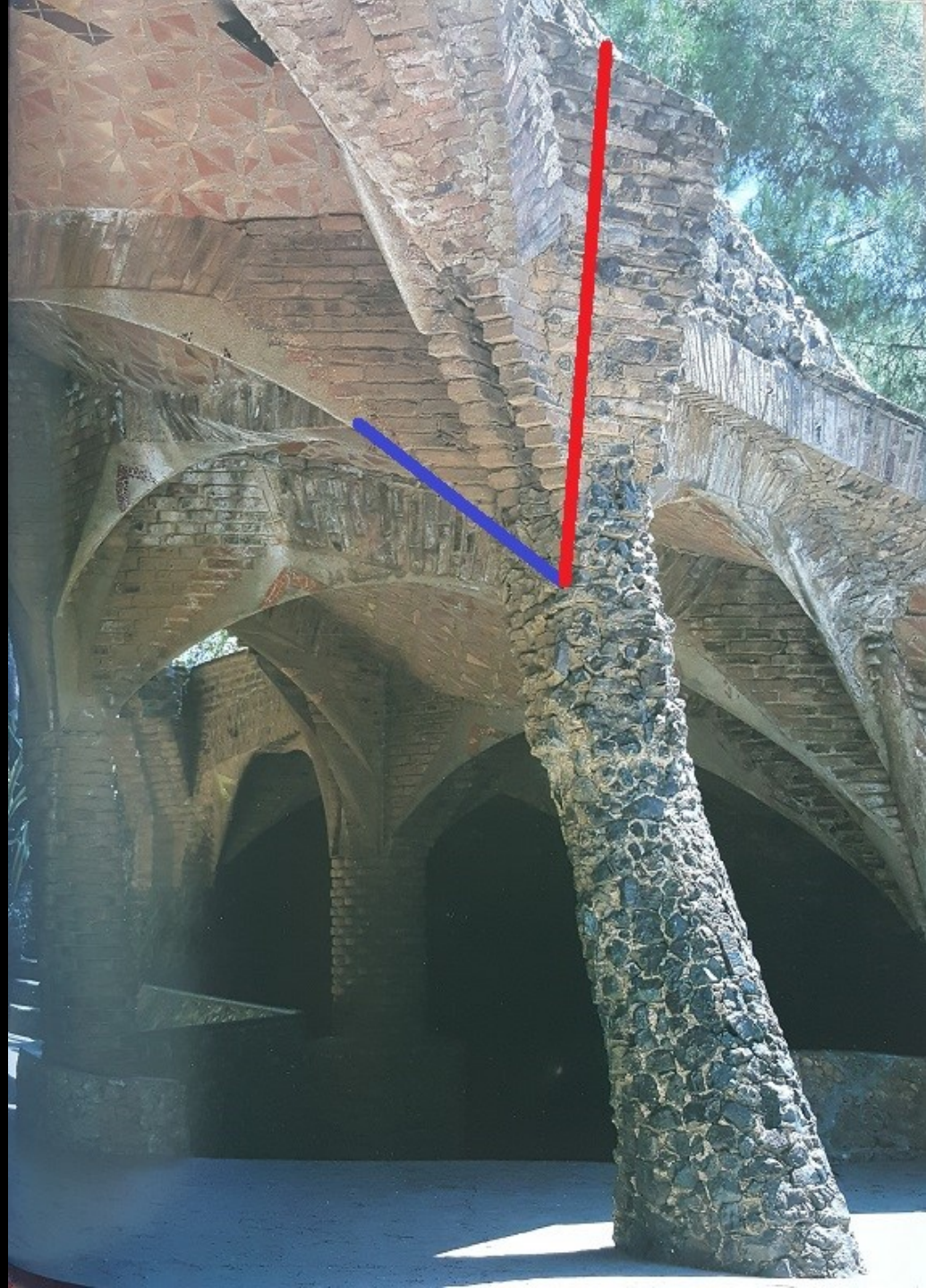


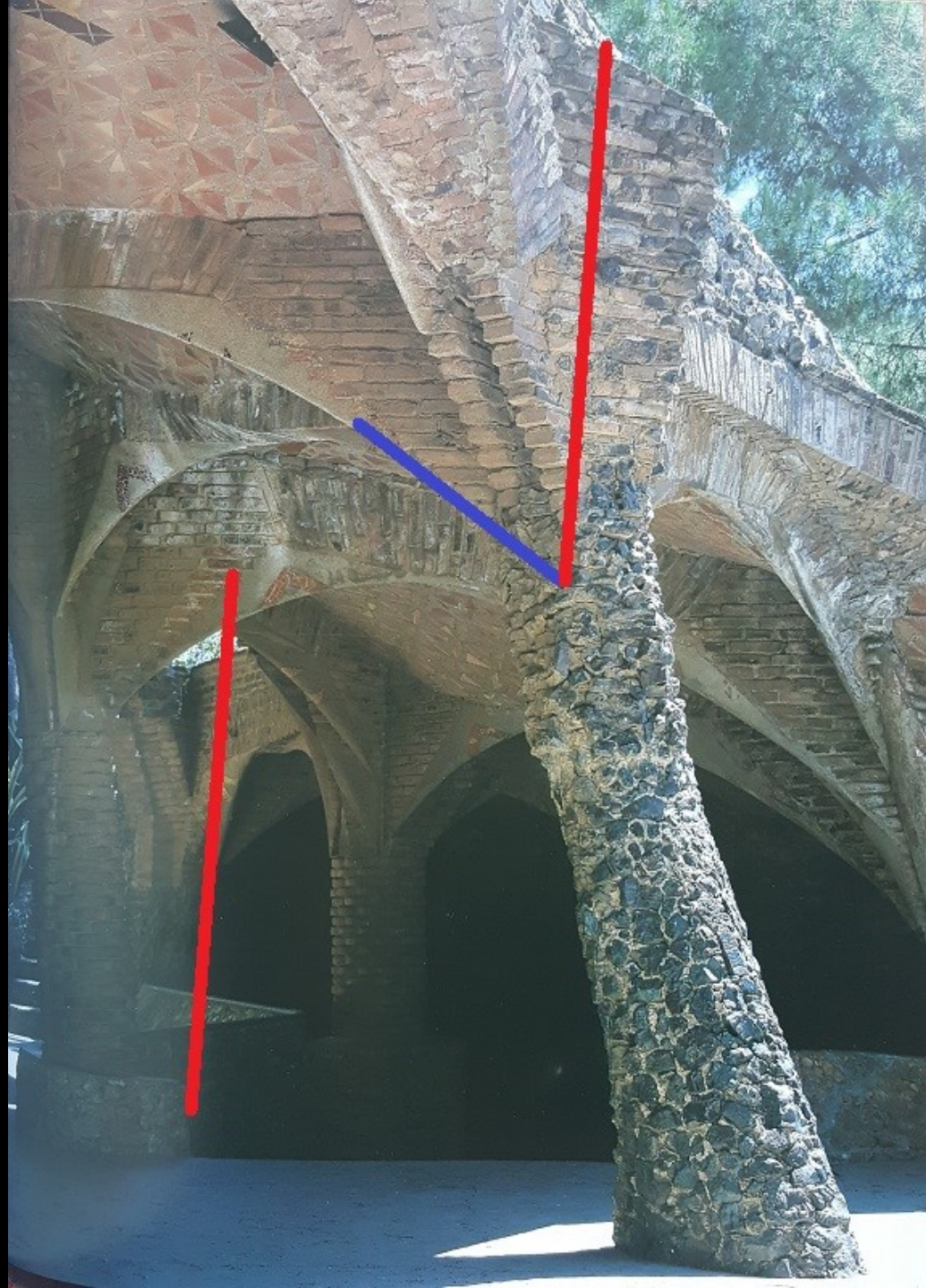


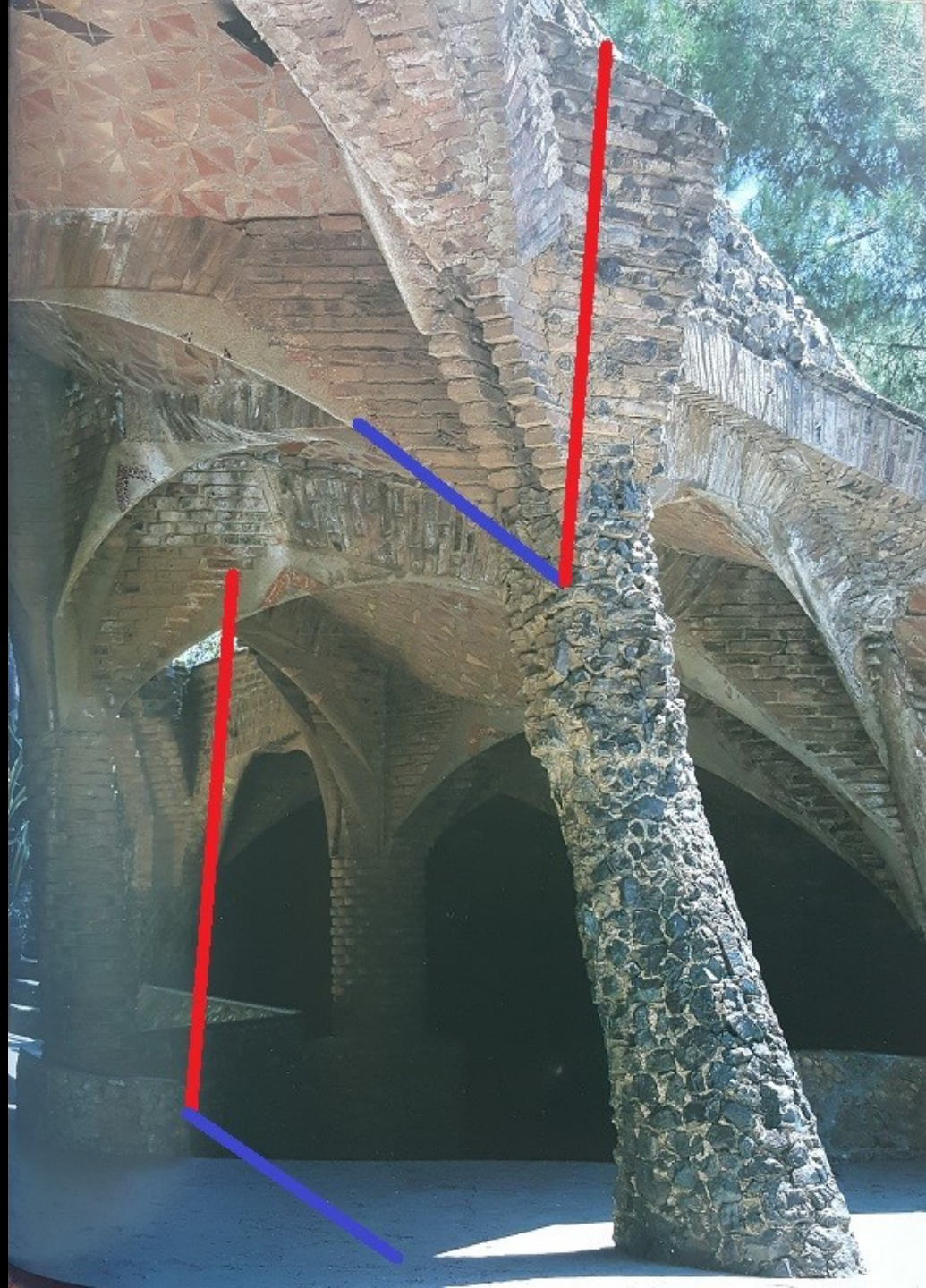


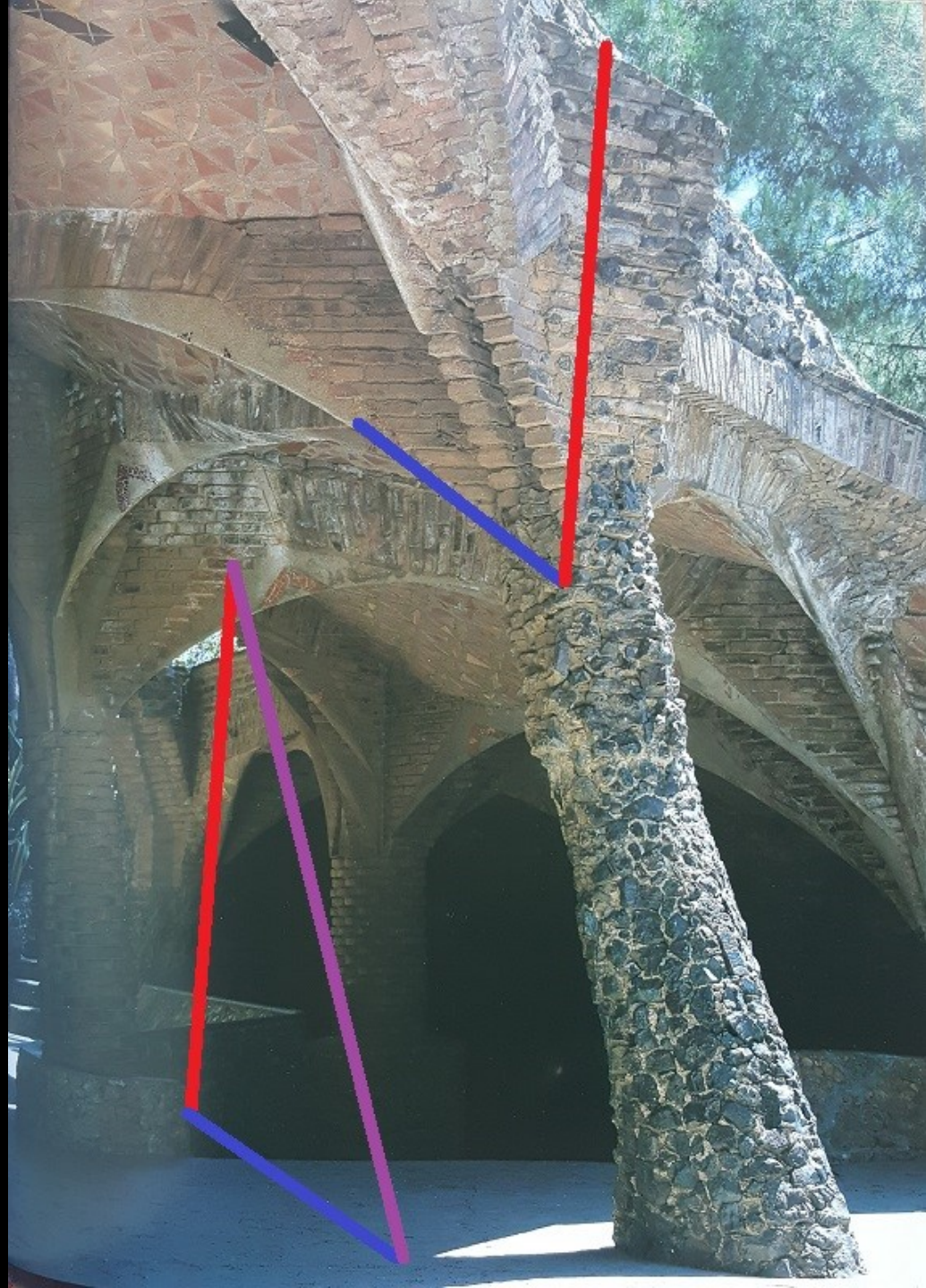




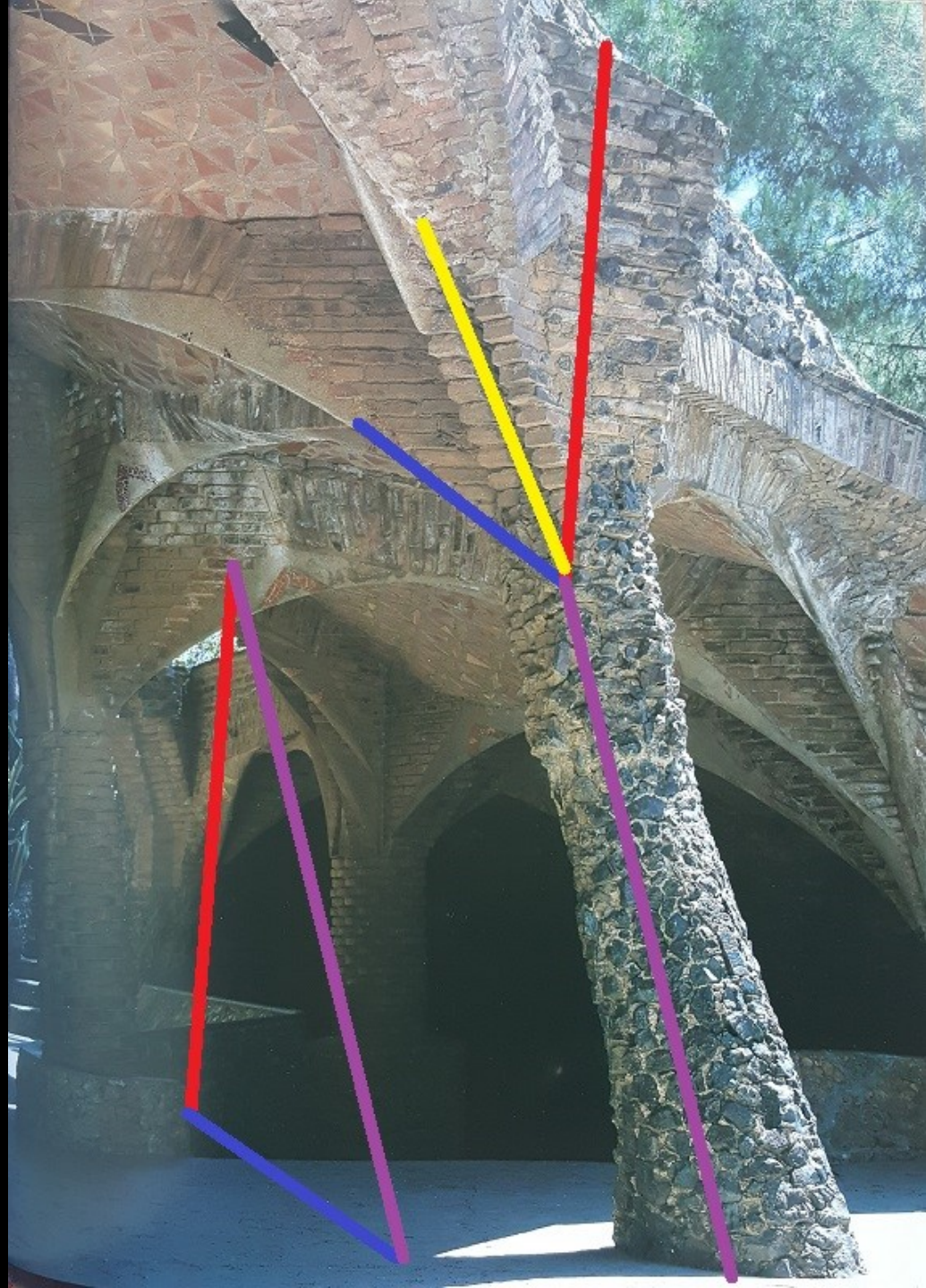


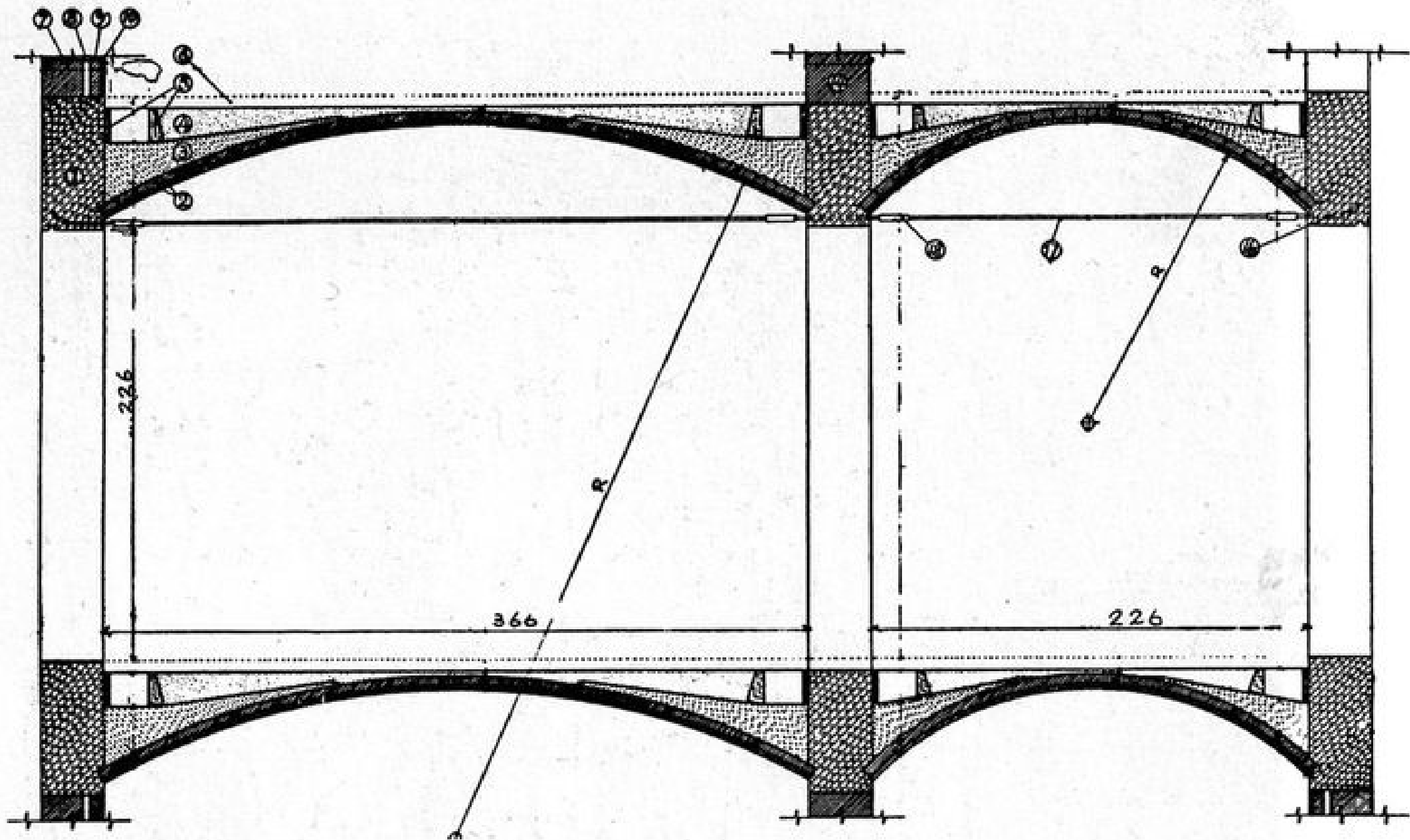


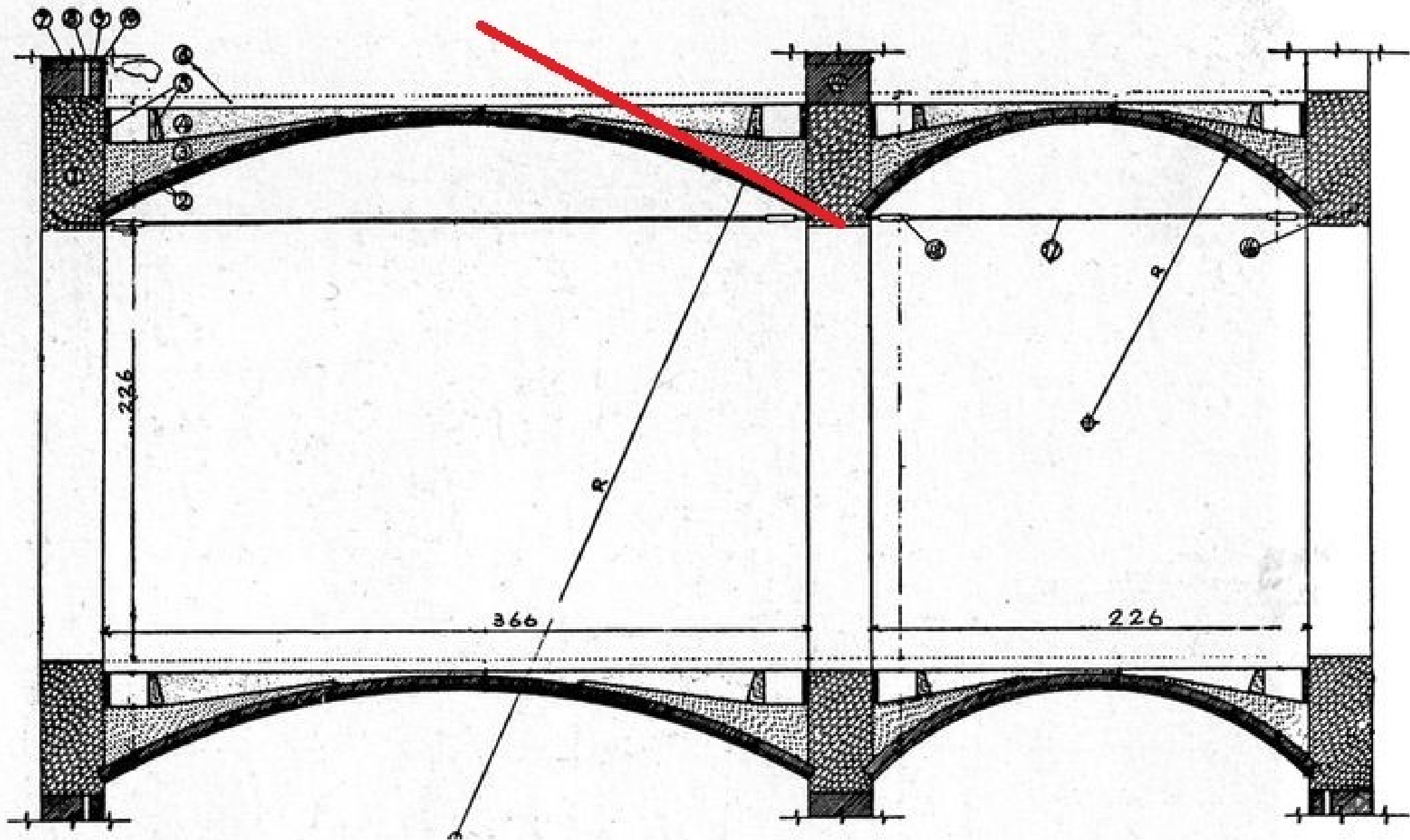


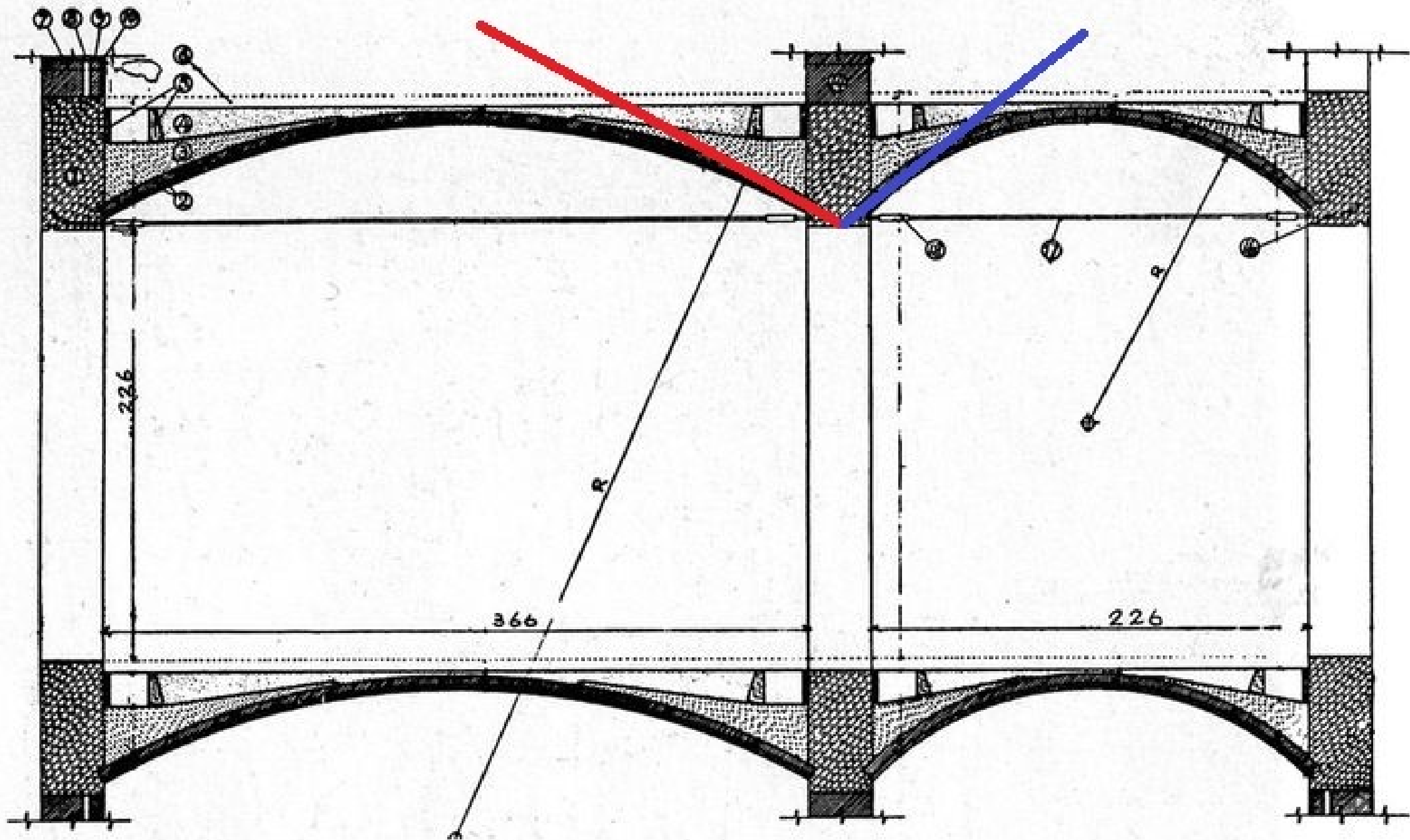


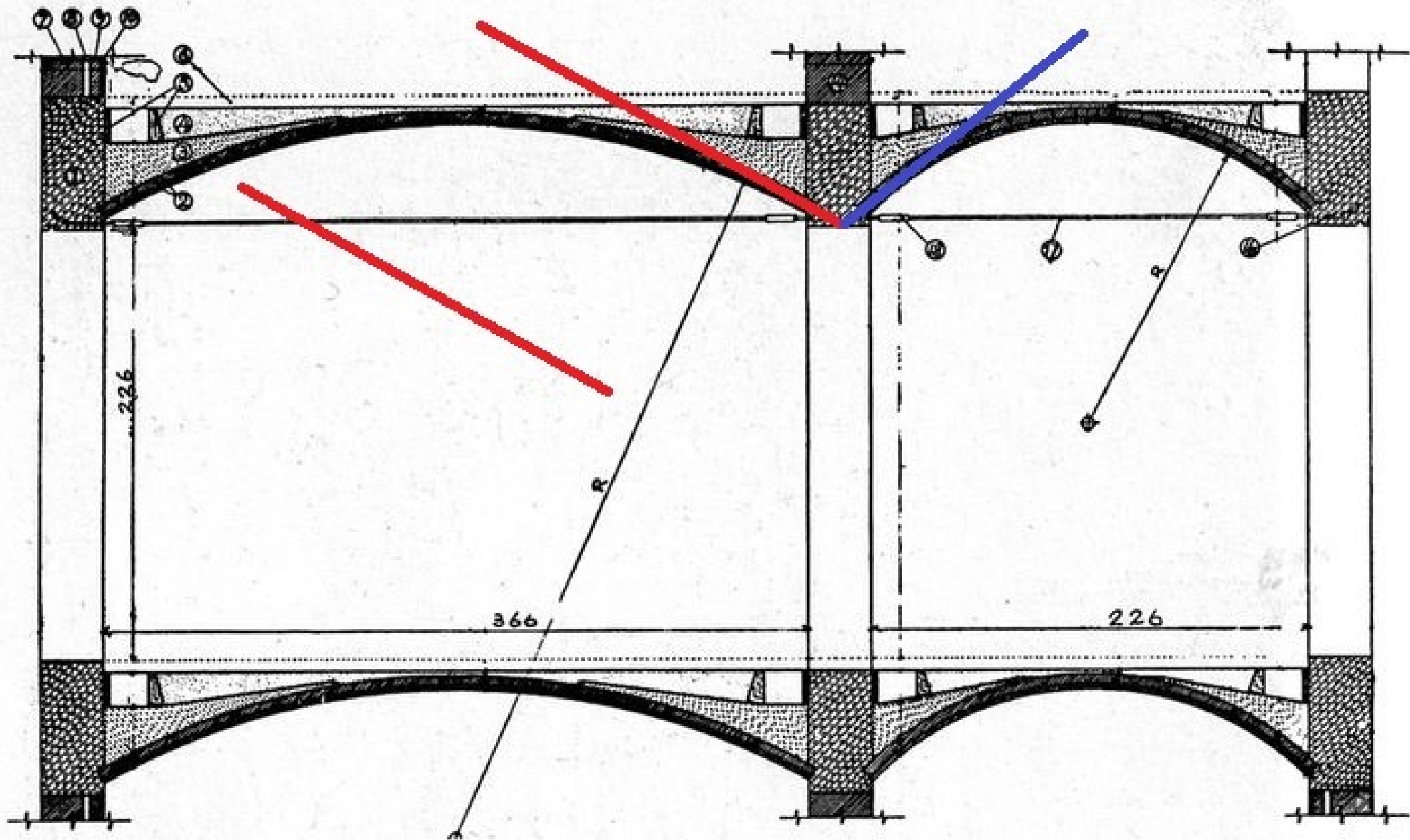


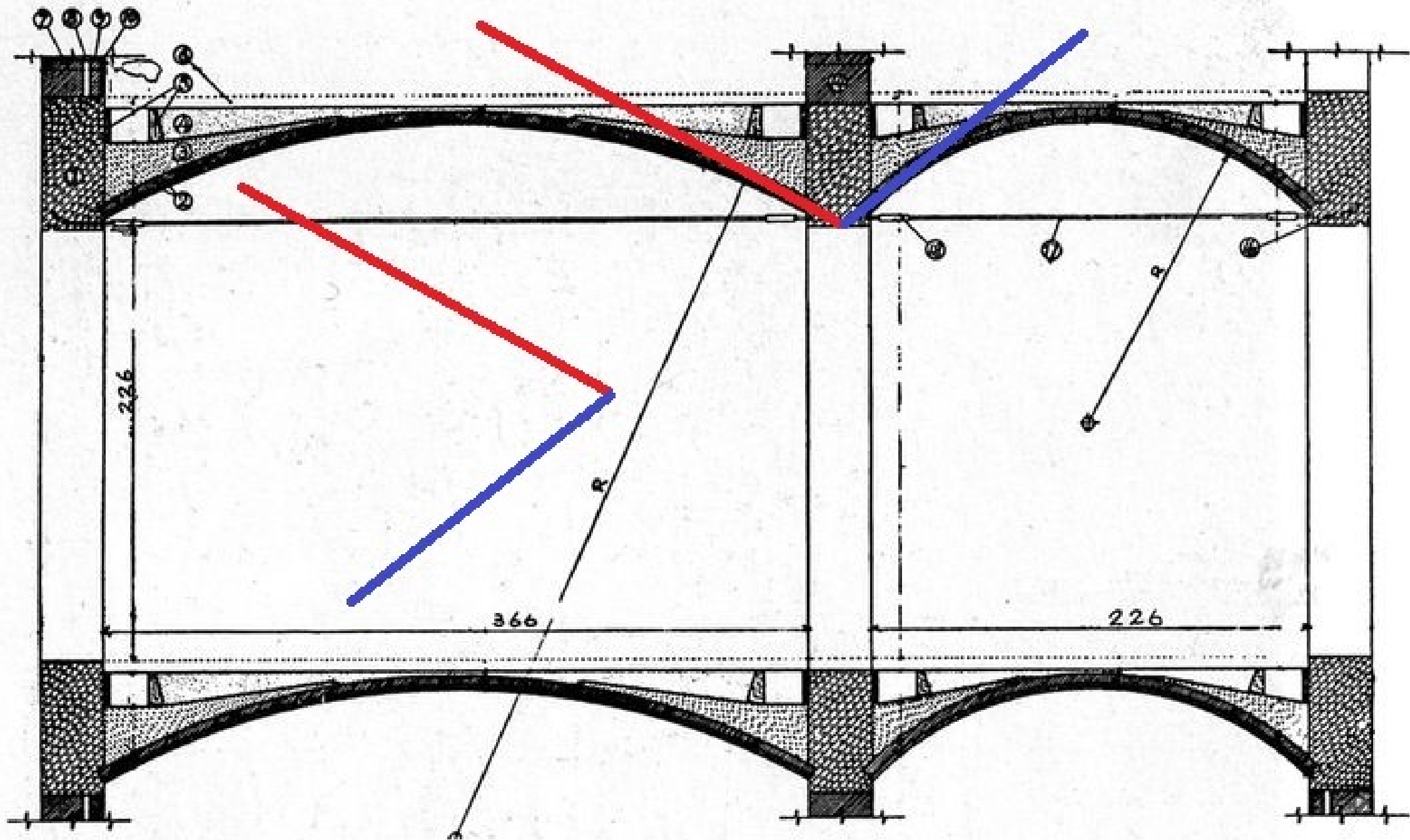


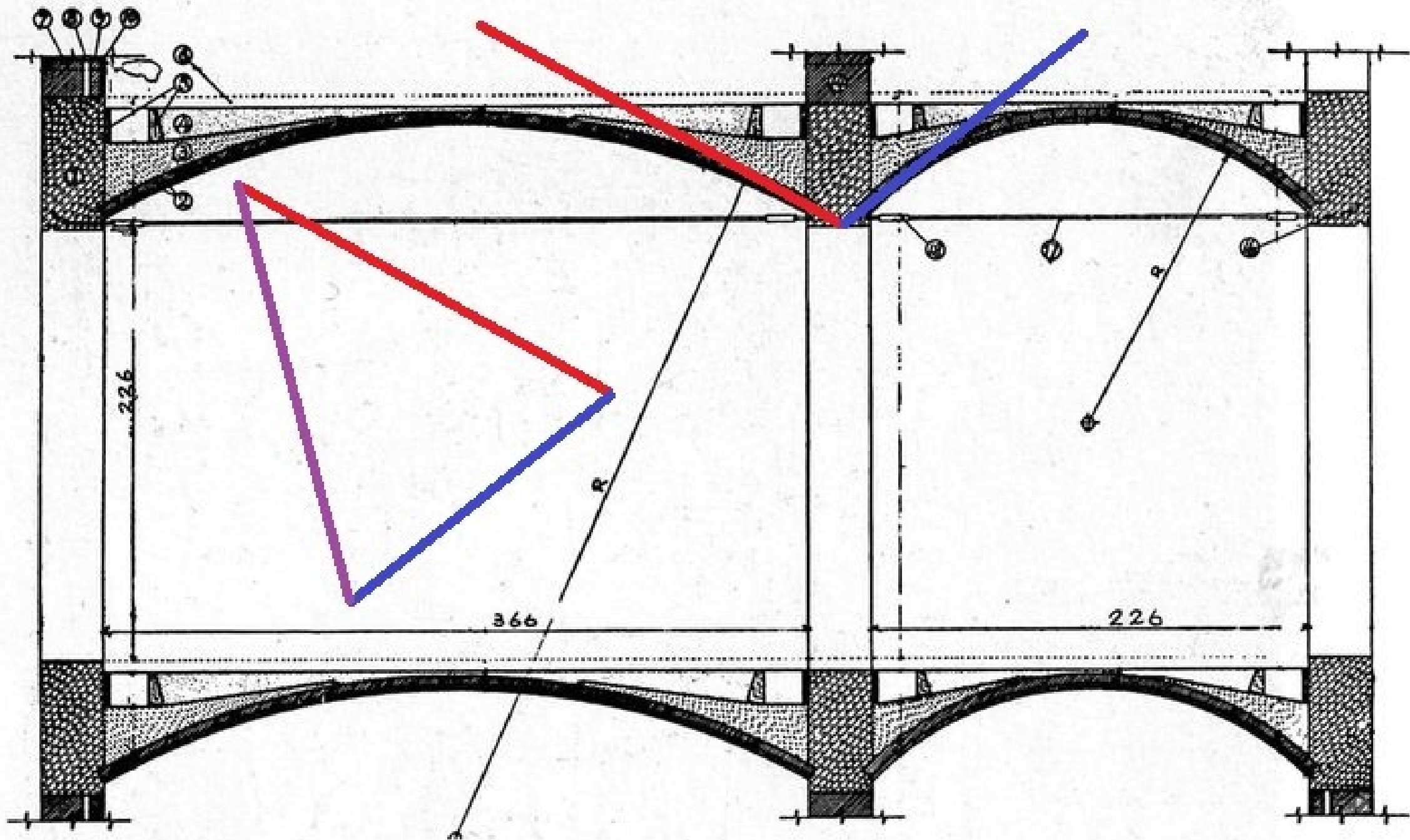


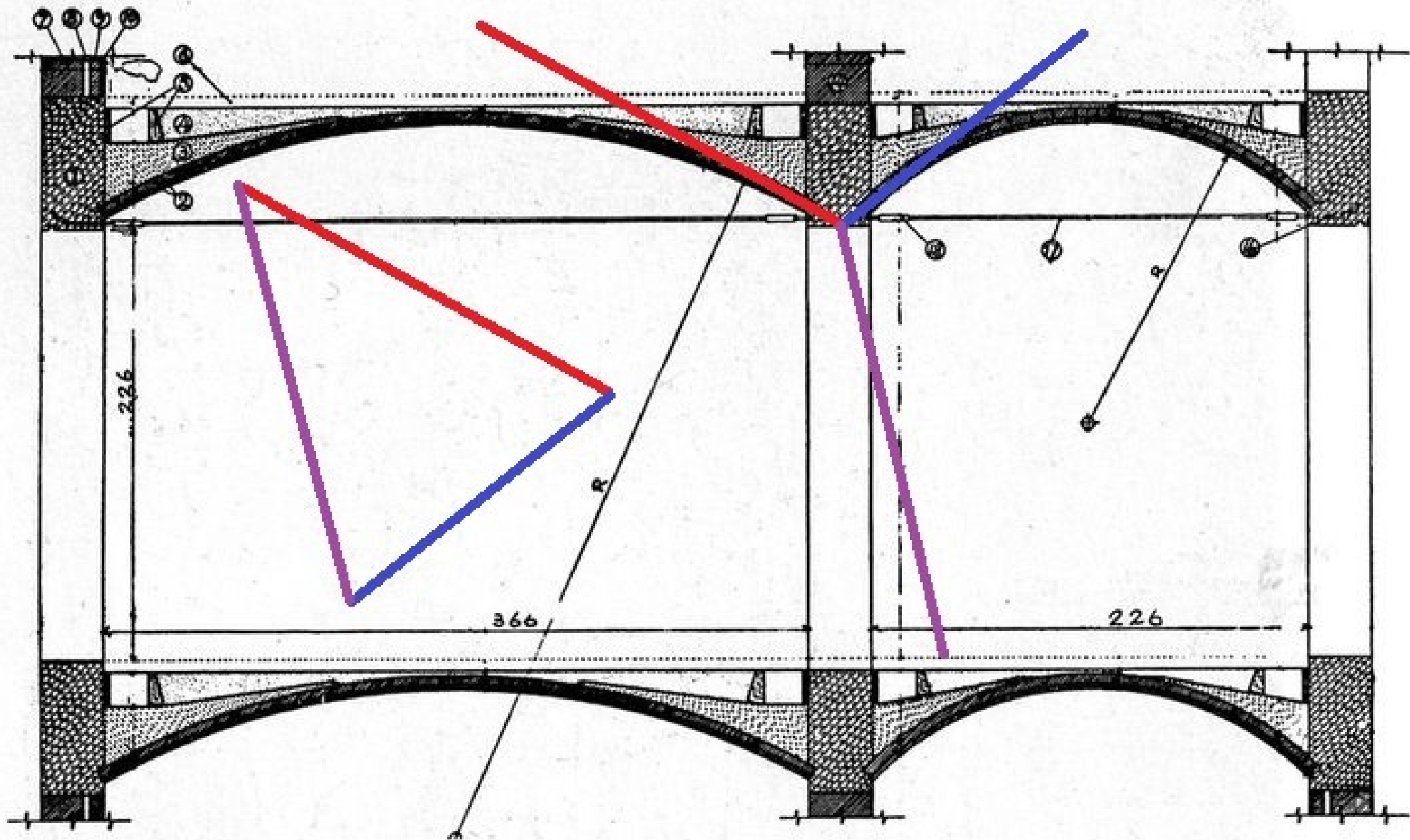


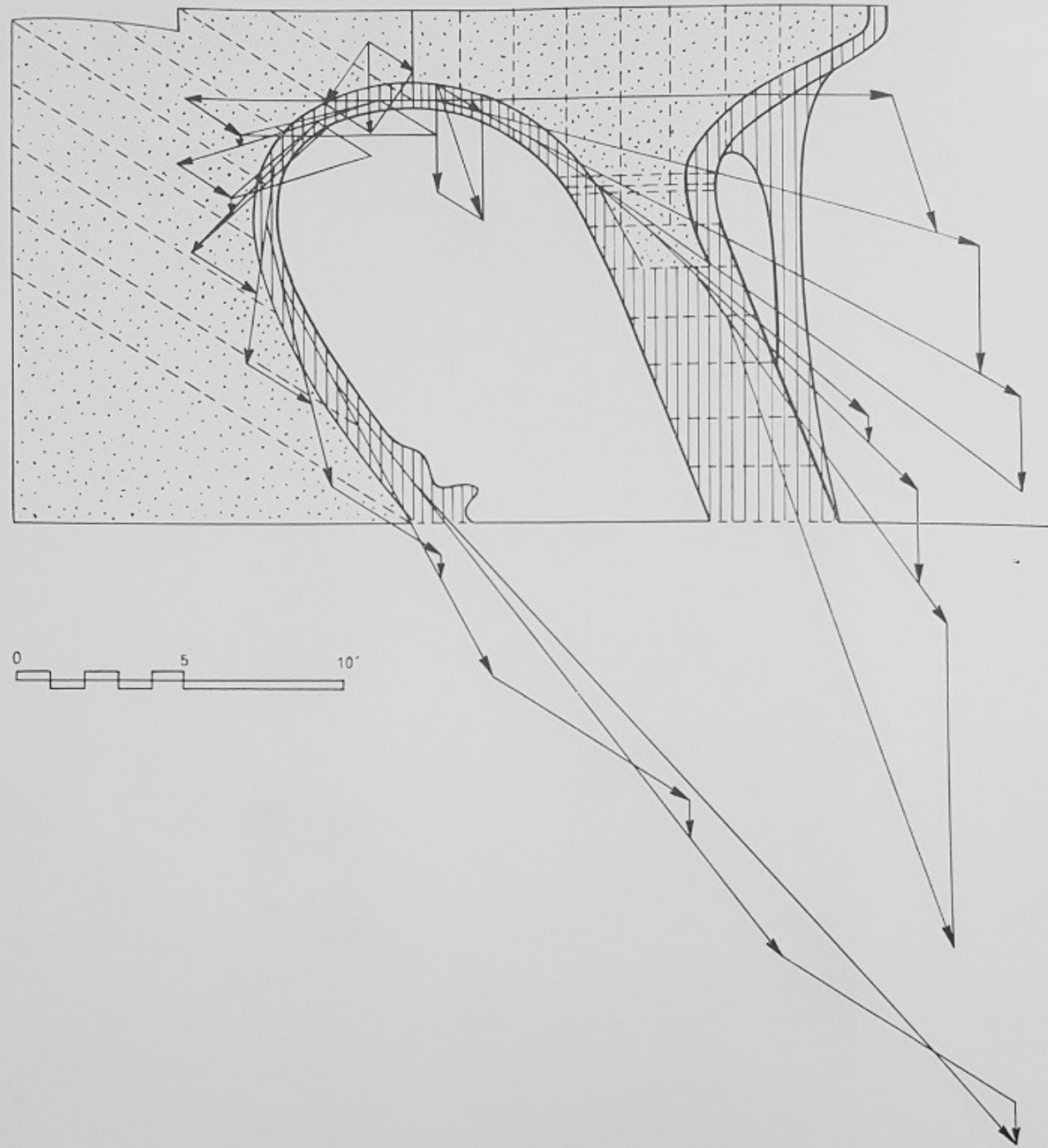


















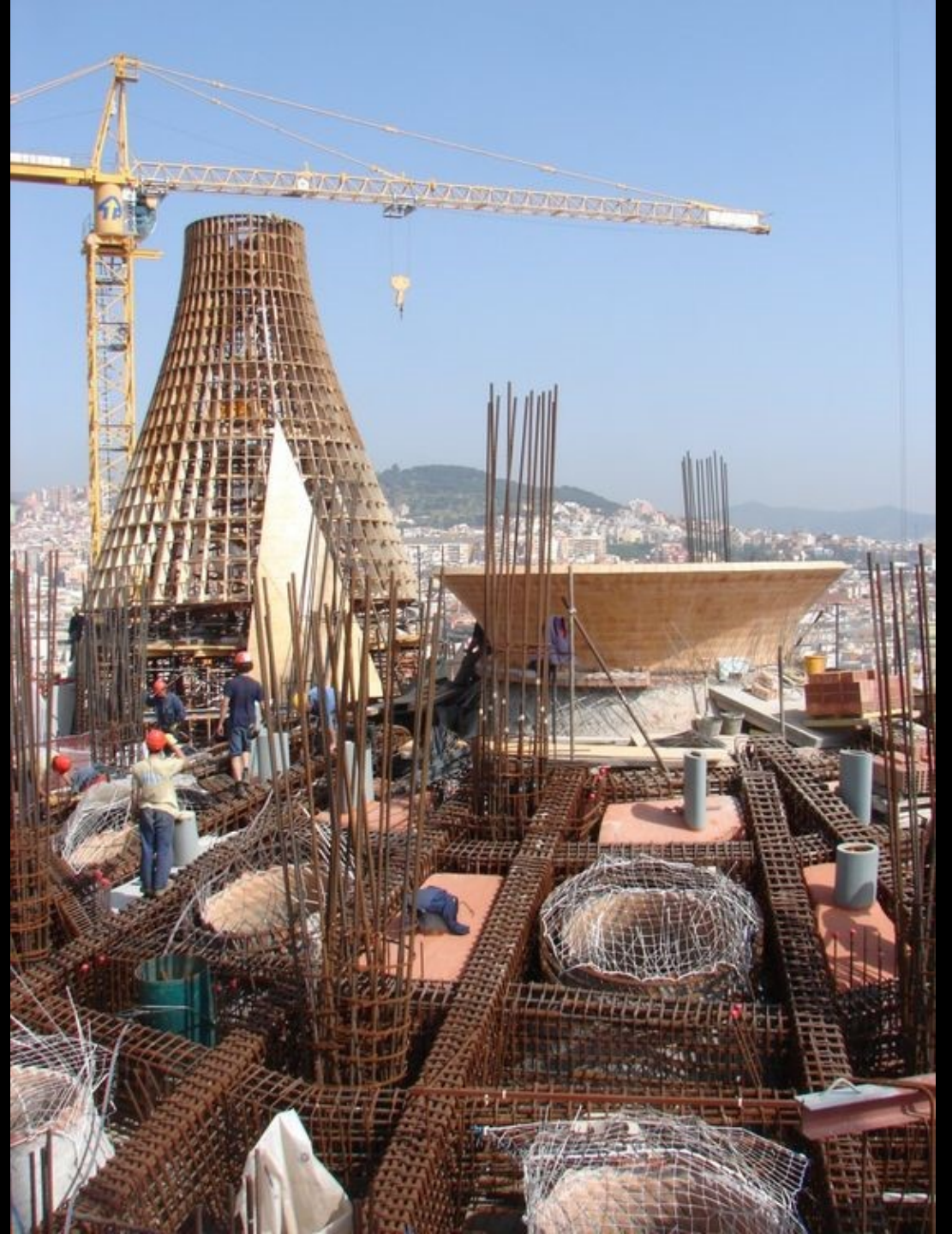










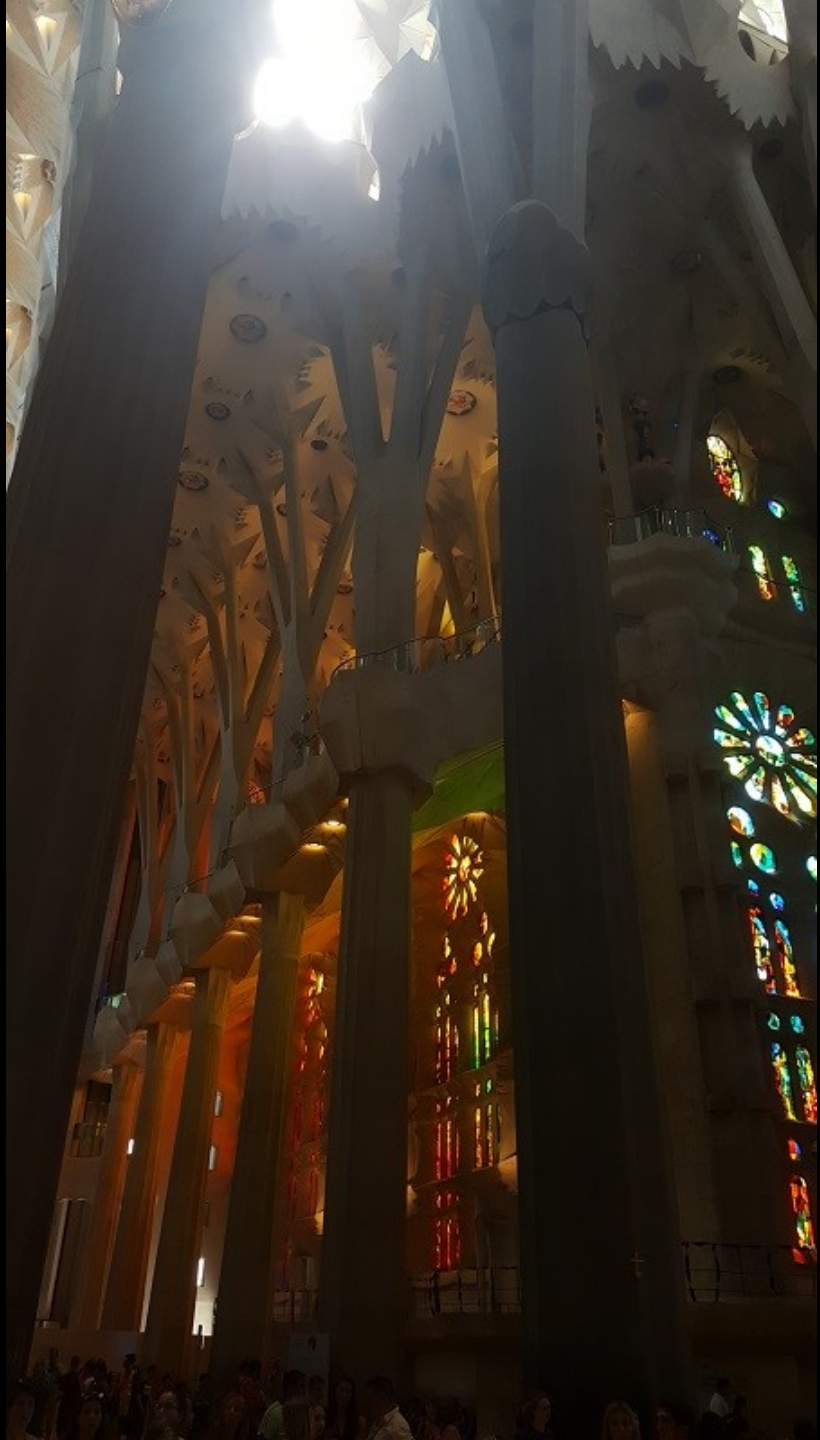






























© eusebio. 2017
fotosintesis.net





Txemi Lopez 07































Bus
Stop



**EMMANUEL
EPISCOPAL CHURCH**
 Sunday Services: Holy Eucharist 8:00 AM
 Holy Eucharist 10:30 AM
 Jazz Vespers (Sept.-May) 2nd Sun. 5:00 PM
 957 W. North Ave. Pittsburgh, PA 15233
 412 231-0454

**HISTORIC
LANDMARK**
 EMMANUEL EPISCOPAL CHURCH
 H. H. RICHARDSON 1865-1866
 PITTSBURGH HISTORY &
 LANDMARKS FOUNDATION

**Bus
Stop**

























